



galileo  
the **viewpoint**  
way  
3.0

# Galileo Idiom for Viewpoint 3.0 User Guide



# Galileo Idiom User Guide

## (for Viewpoint 3.0)

### Disclaimer

The information contained in this document is subject to change without notice. Galileo system enhancements, changes to airline functionality and reservations procedures may require alterations to occur from time to time. Individual and company names used in the examples within this guide are for training purposes only and do not represent any commitment on their behalf.

### Trademarks

This training guide may refer to the following registered trademarks, trademarks or service marks of Galileo International:

- Galileo®
- Globe Device® logo
- CarMaster™
- Claim PNR™
- Custom Check™
- Fare Quote Planner™
- Focalpoint®
- Focalpoint Relay™
- FocalpointNet™
- Galileo e-Agent™
- GlobalFares™
- Inside Availability™
- Inside Link™
- Interactive Sell™
- Last Seat Availability™
- Past Date Quick™
- PrivateFares™
- PrivateFares II™
- Queue Manager™
- RoomMaster™
- TravelScreen™
- Viewpoint™
- Viewpoint™ logo
- Galileo® ViewTrip

Microsoft, Windows and Internet Explorer are registered trademarks of the Microsoft Corporation.

© Copyright Southern Cross Distribution Systems Pty. Ltd. (Galileo Southern Cross) 2001- 2002

This document shall only be used in connection with the work for which it is provided. Neither the whole nor any part of this document shall be disclosed to any party in any form without the written consent of Southern Cross Distribution Systems Pty. Ltd.

**Prepared by:** Solutions Services Department, Sydney - Australia.  
**Author:** Jamie Paterson  
**This Issue:** 30 August, 2002

Southern Cross Distribution Systems Pty. Ltd. ACN 007 067 567

# What is Galileo® Idiom?

Galileo Idiom is a Viewpoint 3.0 add-on product that allows the display and editing of customer itineraries in Microsoft Word 2000/XP. Galileo Idiom comes standard with 4 itinerary styles that may be individually customised with 4 itinerary styles that may be individually customised with header information to suit your business needs.

## Producing a Galileo Idiom Itinerary

Take the following steps to produce an Galileo Idiom itinerary:

1. Open or create the booking file in Viewpoint. If your Custom Toolbar does not appear, select **View** on the menu bar and select **Custom Toolbar**.
2. Click the Idiom icon on the Viewpoint Custom Toolbar to launch the Galileo Idiom screen. Alternatively you can launch from the keyboard using Ctrl + 1.
3. Select the Itinerary Style, Remarks set, and add your name before clicking **Create Itinerary**. Your itinerary will be sent to Microsoft Word, where it can be edited, saved and/or printed.

### Custom Viewpoint™

#### Galileo Idiom

Select Itinerary Style to use :



Select Remarks to Include :

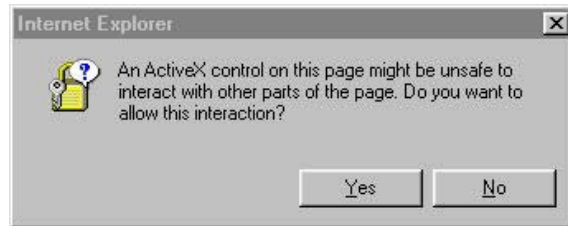
- None
- Domestic
- International
- Auxiliary



Consultant Name :

## User Notes

- The Galileo Idiom request screen remember the previous itinerary style and name entered.
- If you log into the machine as a different user you will get a warning each time you run Galileo Idiom because the CurrentUser profile in the registry will not have been updated.



If this warning appears, click **Yes** and the process will continue.

- If you use Ctrl + P to print, be aware that when you create itinerary to Word that Viewpoint is still in “focus” on your taskbar. The Ctrl + P command will print Viewpoint, not your itinerary in Word. You must click on the Word screen to “focus” before using this command.
- Please contact the Galileo Southern Cross service centre if you need to modify or restore your Galileo Idiom templates.

# Adding Galileo Idiom to Viewpoint Custom Toolbar

Take the following steps to add a Galileo Idiom button to your Viewpoint Custom Toolbar:

1. Select the **Tools** menu, then select **Viewpoint Custom Toolbar Editor**.
2. Select **Browse** from the Button Image Bitmap file. Choose the **Idiom.bmp** icon.



3. Change the Tool Tip to **Galileo Idiom**.

Button Definition

Button Image Bitmap File  
   Transparent

Tool Tip for this button

4. Select **External Executable**.
5. The path of the external executable is **Wscript**.
6. The Argument is **C:\Fp\SWDIR\CustomViewpoint\gscScripts\ifw.js**.

Executable File

External Executable

Optional command line argument

7. Select **Add, New**. The button will now appear on the Editors Toolbarr. At this point you can add additional icons.
8. Select **File, Save**.
9. Viewpoint must be closed and reopened for the changes to take effect.



**Australian Service Centre: 1300 555 000**

**New Zealand Service Centre: 0800 425 453**

**please remember to have your pseudo city code ready to quote to our service centre specialists**

**how can you find out more about who we are and what we offer?**

**By visiting our website: [www.galileo.com.au](http://www.galileo.com.au) or [www.galileo.co.nz](http://www.galileo.co.nz)**

**Or contacting our sales offices at:**

**new south wales**

Level 6, 35 Grafton Street  
Woollahra NSW 2025  
Telephone: 02 9391 4000  
[nsw@galileo.com](mailto:nsw@galileo.com)

**queensland**

Level 3, Mineralogy House  
135 Wickham Terrace  
Brisbane QLD 4000  
Telephone: 07 3230 5800  
[qld@galileo.com](mailto:qld@galileo.com)

Shop 7, 120 Collins Avenue  
Edgehill, Cairns QLD 4870  
Telephone: 07 4032 1575  
[qld@galileo.com](mailto:qld@galileo.com)

**victoria**

Level 4, 607 Bourke Street  
Melbourne VIC 3000  
Telephone: 03 9629 4566  
[vic@galileo.com](mailto:vic@galileo.com)

**south australia**

Level 10, CML Building  
45 King William Street  
Adelaide SA 5000  
Telephone: 08 8231 4733  
[vic@galileo.com](mailto:vic@galileo.com)

**western australia**

Level 15, 256 Adelaide Terrace  
Perth WA 6000  
Telephone: 08 9223 7100  
[wa@galileo.com](mailto:wa@galileo.com)

**new zealand**

Level 4, Citibank Centre  
23 Customs Street  
East Auckland NZ  
Telephone: 09 358 4944  
[nz@galileo.com](mailto:nz@galileo.com)

Level 1, 829 Colombo Street  
Christchurch NZ  
Telephone: 03 379 0545  
[nz@galileo.com](mailto:nz@galileo.com)

Level 6  
Travel and Tourism House  
73-89 Boulcott Street  
Wellington NZ  
Telephone: 04 801 8174  
[nz@galileo.com](mailto:nz@galileo.com)