

**Travelport Rapid Reprice - Galileo
Installation Guide**



**THE INFORMATION CONTAINED IN THIS DOCUMENT IS CONFIDENTIAL AND
PROPRIETARY TO TRAVELPORT**

Copyright

Copyright © 2010 Travelport and/or its subsidiaries. All rights reserved.

Travelport provides this document for information purposes only and does not promise that the information contained in this document is accurate, current or complete. This document is subject to change without notice.. No part of this document may be reproduced, stored in a retrieval system, or transmitted in any form or any means electronic or mechanical, including photocopying and recording for any purpose other than the licensee's personal use without the prior written permission of Travelport and/or its subsidiaries.

Trademarks

Travelport and/or its subsidiaries may have registered or unregistered patents or pending patent applications, trademarks copyright, or other intellectual property rights in respect of the subject matter of this document. The furnishing of this document does not confer any right or licence to or in respect of these patents, trademarks, copyright, or other intellectual property rights.

All other companies and product names are trademarks or registered trademarks of their respective holders.

Contents

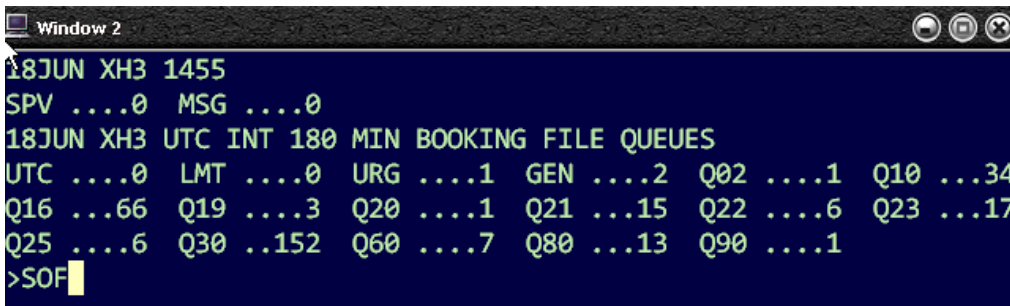
Basic Install 4
Upgrading your Rapid Reprice version 9
Option for Rapid Reprice silent install 11



Basic Install

1) Sign out from Galileo and close the program, as shown below.

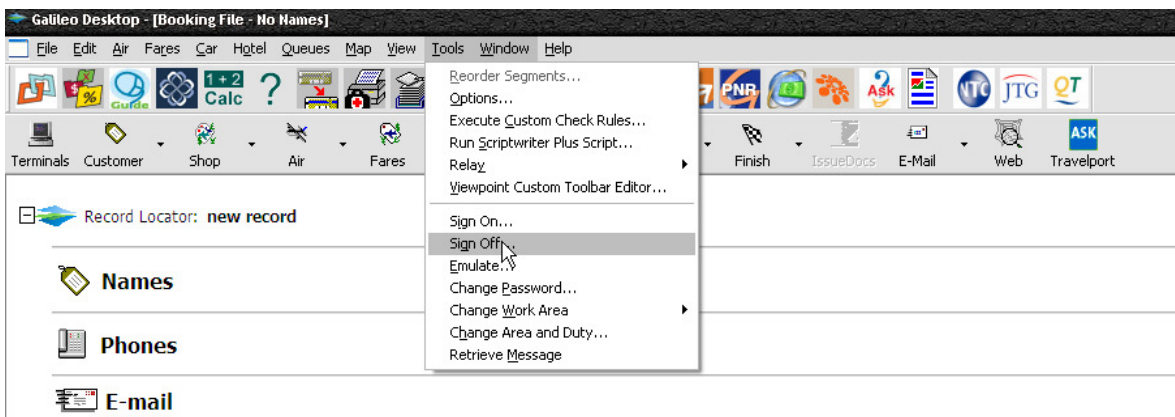
For Focalpoint:



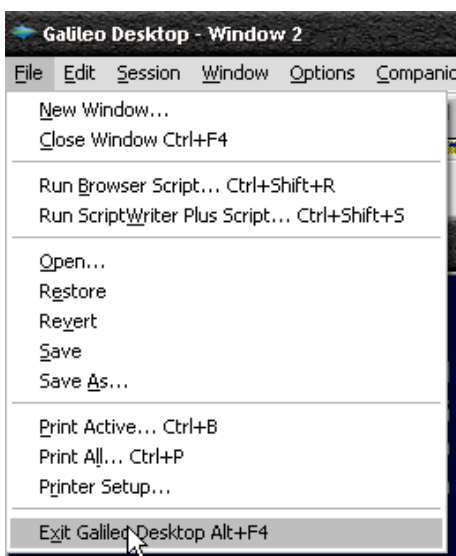
```

Window 2
18JUN XH3 1455
SPV ....0 MSG ....0
18JUN XH3 UTC INT 180 MIN BOOKING FILE QUEUES
UTC ....0 LMT ....0 URG ....1 GEN ....2 Q02 ....1 Q10 ...34
Q16 ...66 Q19 ...3 Q20 ...1 Q21 ...15 Q22 ...6 Q23 ...17
Q25 ...6 Q30 ..152 Q60 ....7 Q80 ...13 Q90 ....1
>SOF
    
```

Or, in Viewpoint:



Then, close the program using the File > Exit menu command.



2) Next, please download and run the [Rapid Reprice Installation file from the Australia/New Zealand Virtual Support Centre](#). Simply click on the link and then in Internet Explorer, click 'Run' or 'Open'. If you are using Mozilla Firefox, please click on the link and click 'Save', then to launch the installation file, double click on it from your Downloads list.

Please note, that if you are having problems running the file in Internet Explorer, you can save the file to your windows desktop and then run it. The file will show on your desktop like this:



Once you can see it, please double click to launch the installation. Please tell any warnings from Windows or your firewall programs relating to Rapid Reprice to 'Continue', 'Run' or 'Allow'. You may receive more than one warning or message, so please ensure you read all of them and respond properly so that Rapid Reprice can install without hindrance.

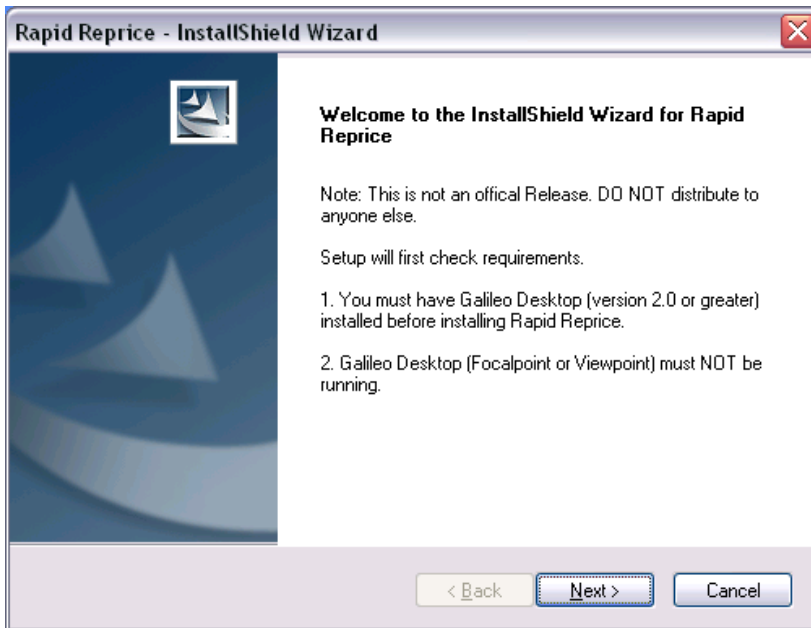
If Galileo Desktop or Focalpoint/Viewpoint has not been closed properly before attempting to install Rapid Reprice, you will receive this message:



If you do receive this message, please simply close the program as shown above and try running the Rapid Reprice installation again.

3) The Install shield Wizard will install Rapid Reprice.

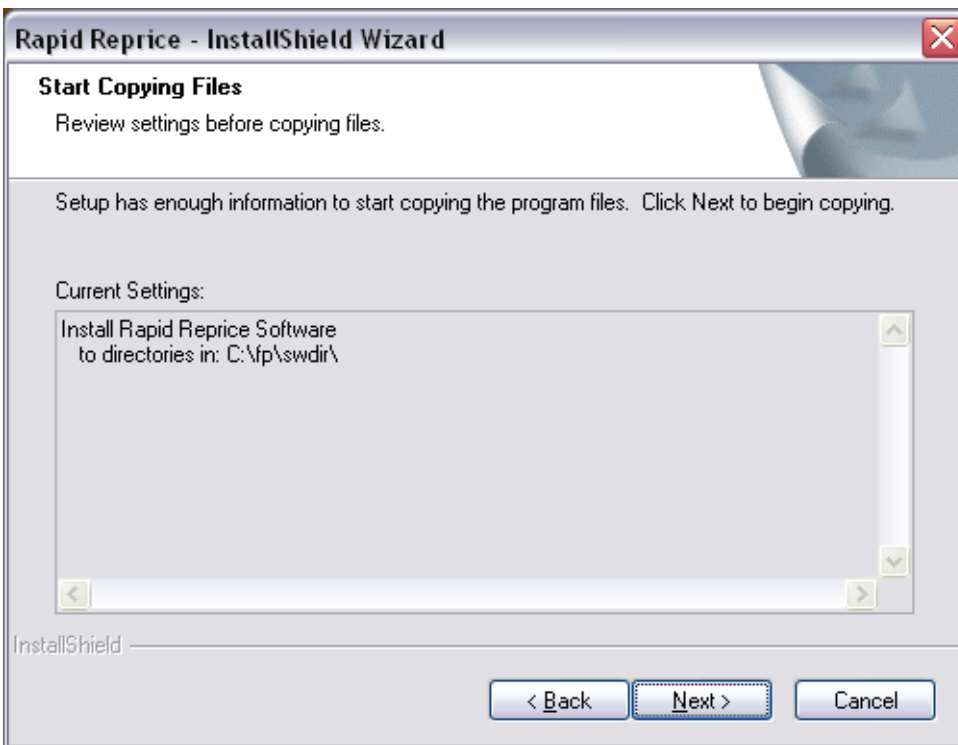
Click **Next >** to continue, confirming the data displayed.



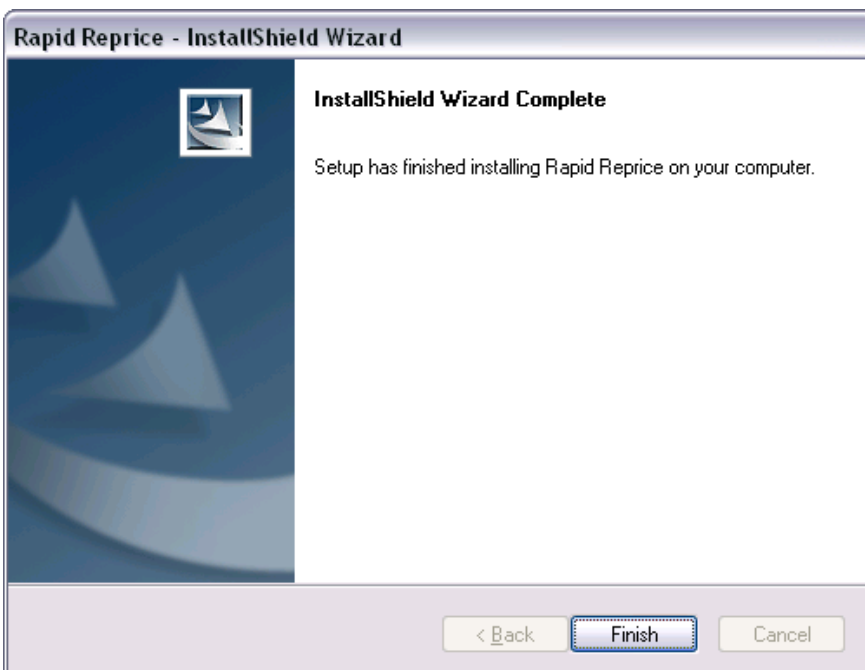
4) Click **Yes** to accept the license agreement and continue.



5) Click **Next >** to confirm the system folder Rapid Reprice will install to and to complete the installation of Rapid Reprice on your PC.



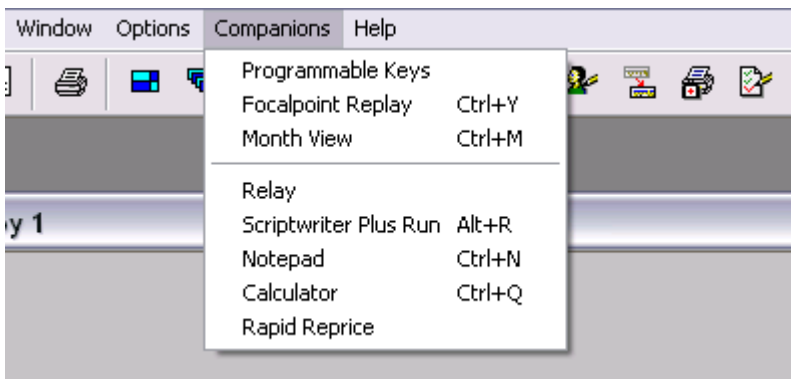
6) Click YFinishΦ to end the installation wizard.



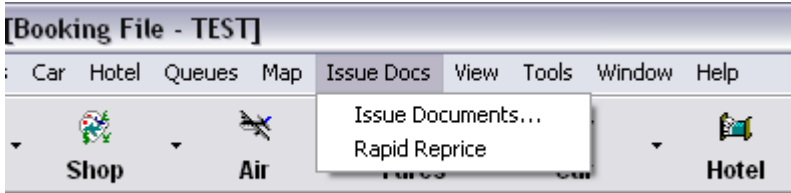
This completes the installation of Rapid Reprice on your computer. Rapid Reprice can now be accessed when using your Focalpoint/Viewpoint or Galileo Desktop software.

To find Rapid Reprice, you must have Galileo Desktop or Focalpoint/Viewpoint open.

a) From the Focalpoint window Rapid Reprice can be located within the YcompanionsΦ drop down folder.



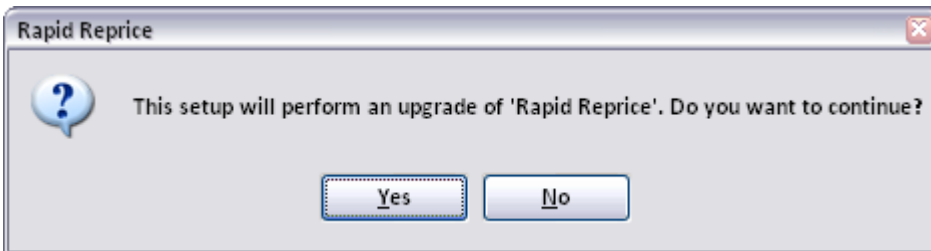
b) From the Viewpoint window Rapid Reprice can be located within the YIssue Docs drop down folder.



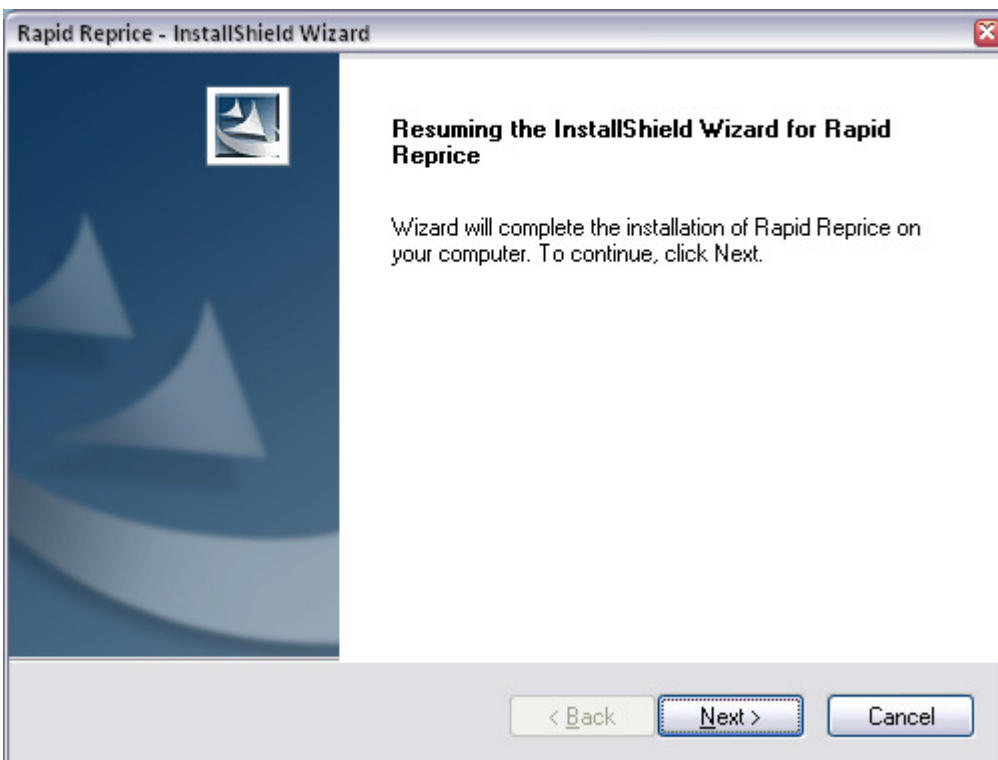
Upgrading your Rapid Reprice

If you were running an earlier version of Rapid Reprice, you will need to upgrade to the most recent version. To do so, please follow steps 1 and 2 of the Basic Install guide above, and then follow these steps:

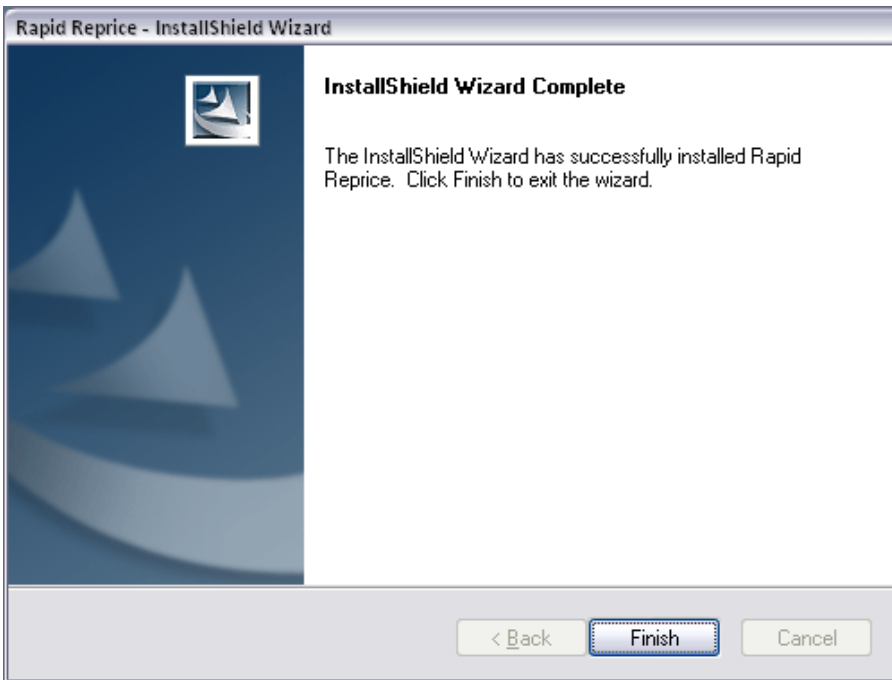
When the installation file for the most recent version of Rapid Reprice is launched on a computer where it is already installed, you will receive the below message. Please Select 'Yes'.



Then please click 'Next' to begin the upgrade:

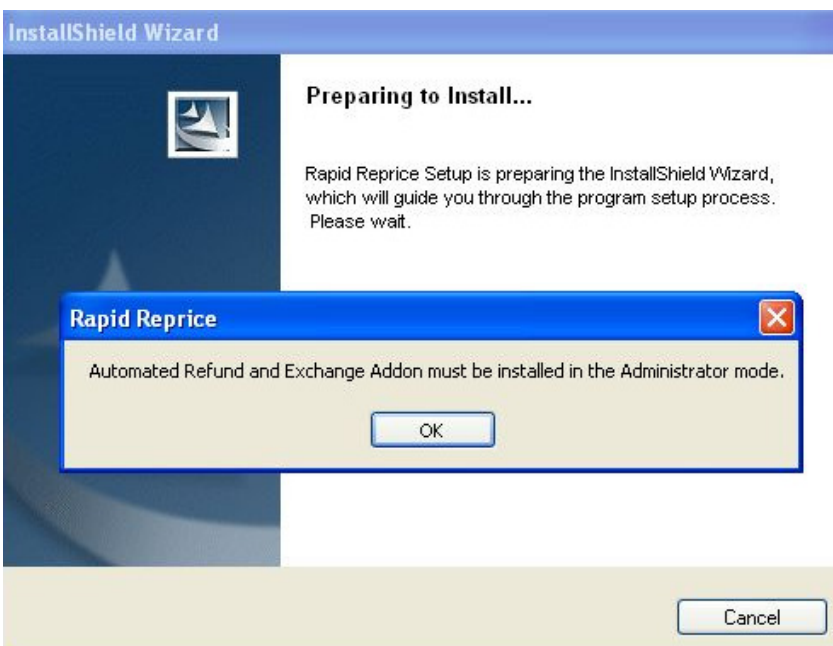


When the Install Wizard has finished the upgrade, please click 'Finish' to end the wizard and complete the upgrade process.



Note: Should the following message appear when installing Rapid Reprice you do not have the security rights to install products on to your PC.

You should contact your office administrator or IT support to install Rapid Reprice.



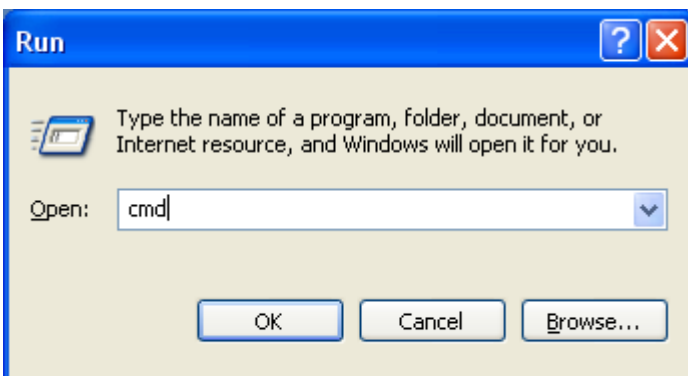
Rapid Reprice Silent Install

(Please note that this is available via version 1.0.0.9 and we would recommend that this method is only completed by your network or server administrator)

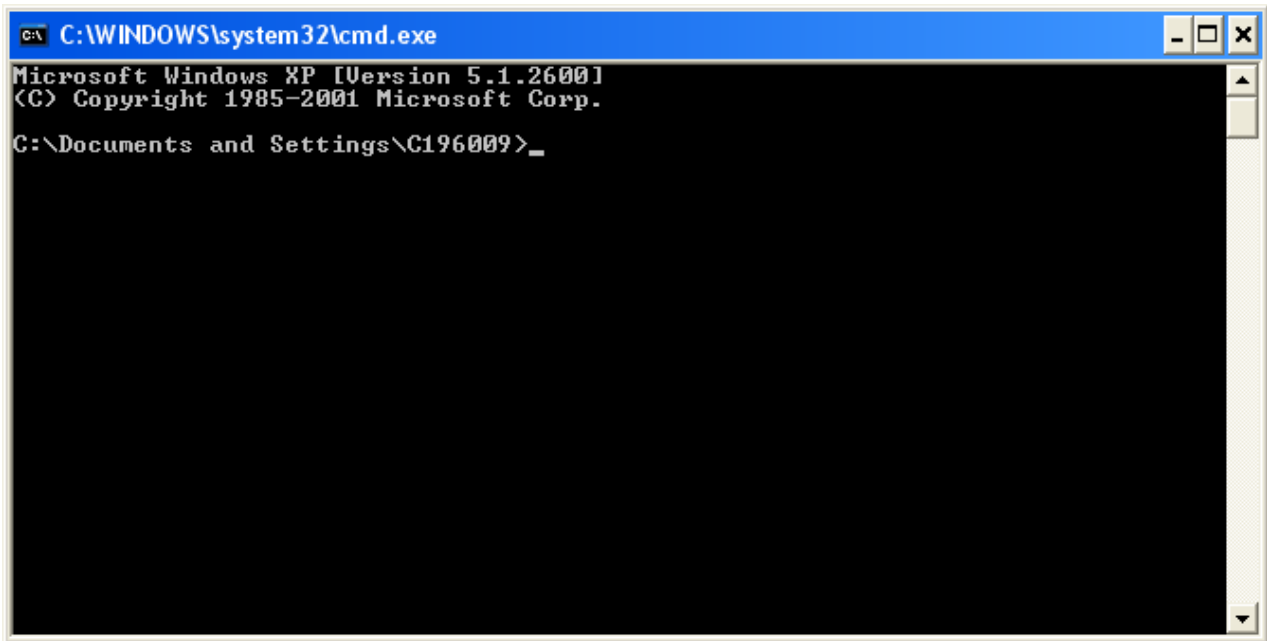
1. Make sure the machine you are installing has Galileo Desktop 1.01 or higher or FP 3.5 installed and neither of these applications are currently running otherwise the silent install will fail.
2. Copy the file RapidRepriceInstall_1.0.0.9.exe to your local **C:\ drive directory**.
3. Open a dos command window by going to Start run



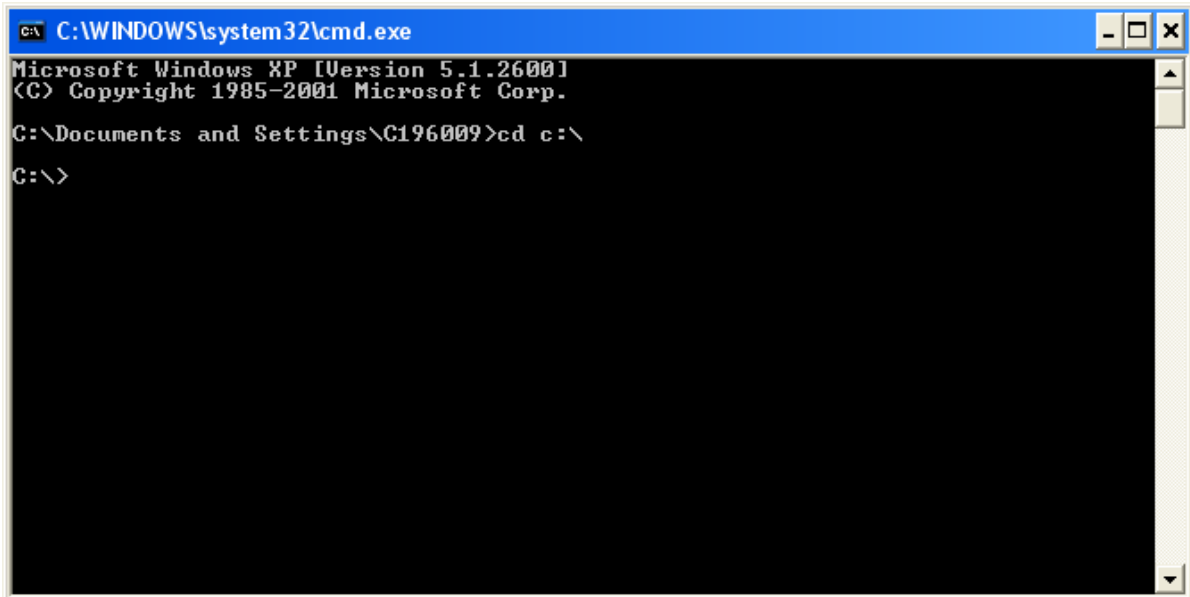
4. This will provide a dialog box and here type in 'cmd' (or find the Command Prompt under 'Programs / Accessories')



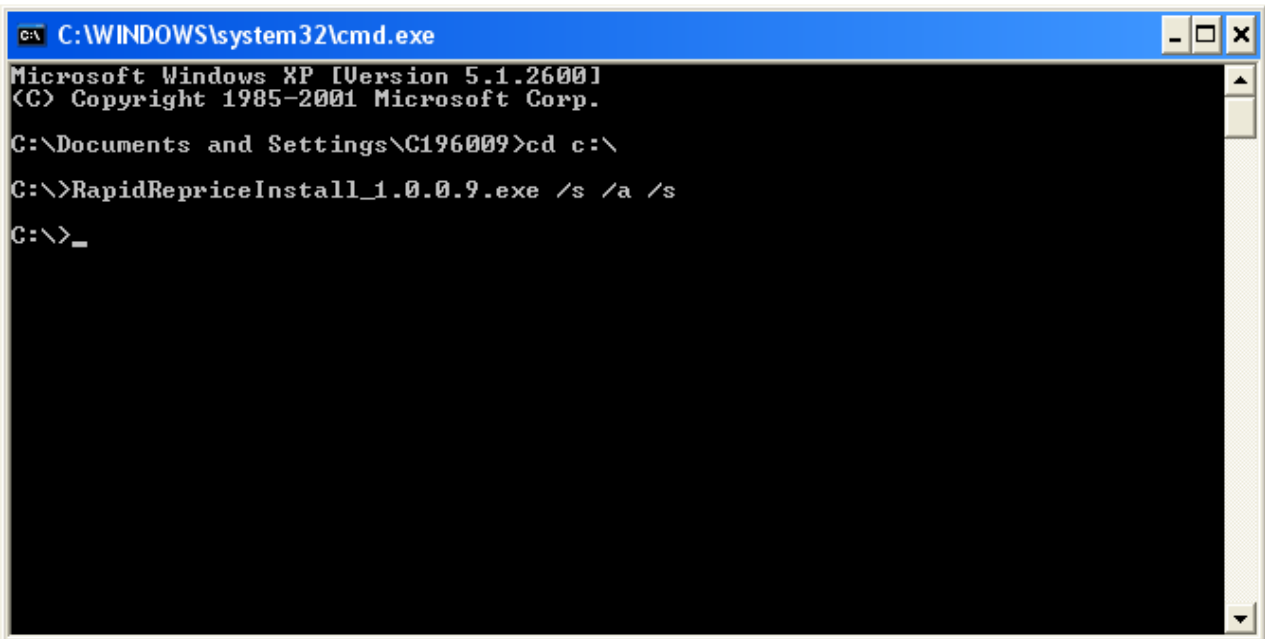
5. You will now see the Command Prompt (dos command window)



6. In the dos command window, navigate to where you copied RapidRepriceInstall_1.0.0.9.exe by typing **Ycd c:\Φ**



8. Type in the command window (**DON'T COPY & PASTE**) `YRapidRepriceInstall_1.0.0.9.exe /s /a /s` then hit the enterKey, this will run the install silently.



```
C:\WINDOWS\system32\cmd.exe
Microsoft Windows XP [Version 5.1.2600]
(C) Copyright 1985-2001 Microsoft Corp.
C:\Documents and Settings\C196009>cd c:\
C:\>RapidRepriceInstall_1.0.0.9.exe /s /a /s
C:\>_
```

The install is completed and Galileo application is ready to be opened.