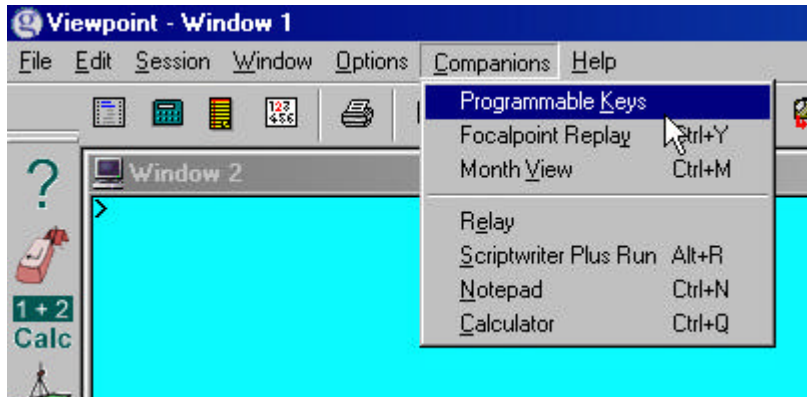




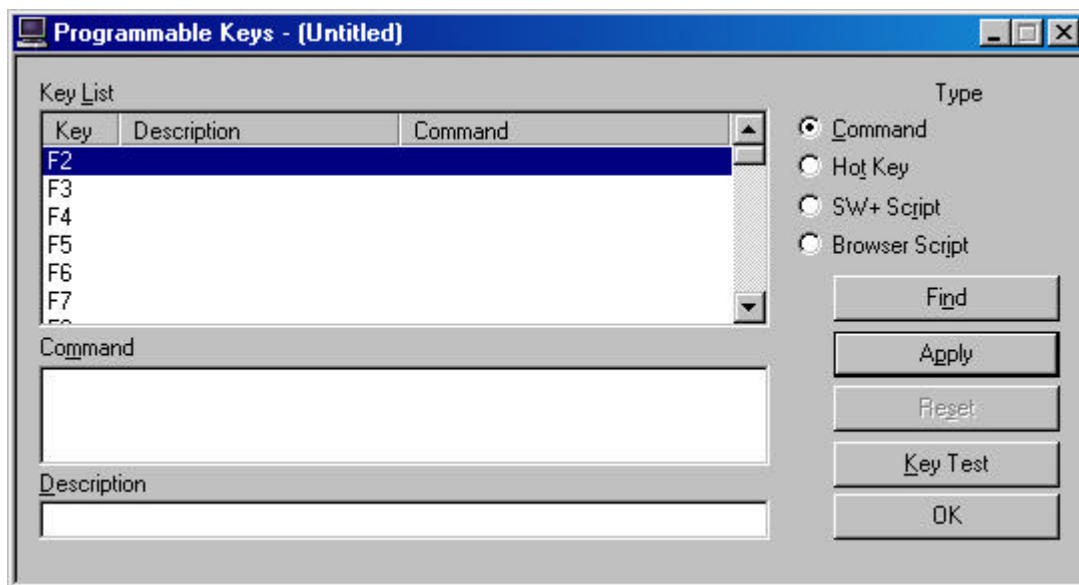
Creating Focalpoint Programmable Keys

Following these simple steps will allow the user to record and replay standard host entries by selecting a single key stroke.

In Focalpoint mode select **Programmable Key**s from the **Companions** pull down menu.



The Programmable Keys editor will display as shown below:



Note at the top of the screen the file is currently "untitled". If your keys are not "untitled" then a file name will appear: For example "LISA.PKEYS.XML".

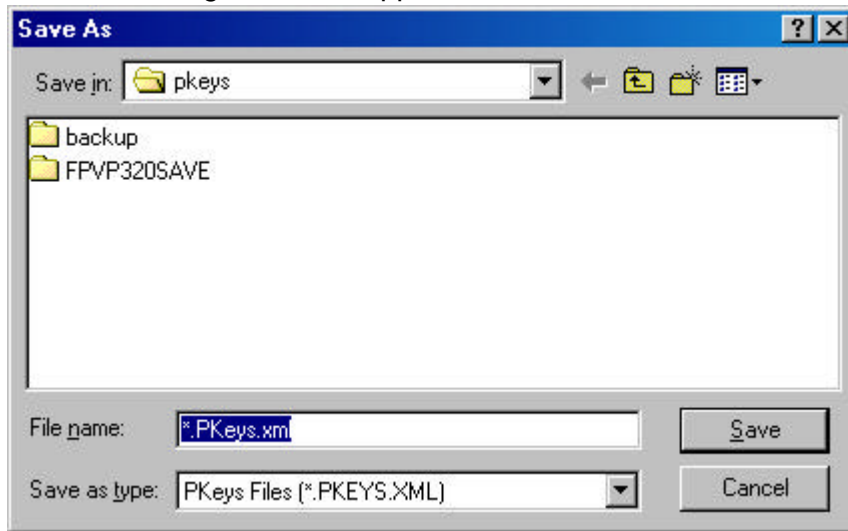
All files extensions always end in .PKEYS.XML

If your KEYS are titled go to page 3.

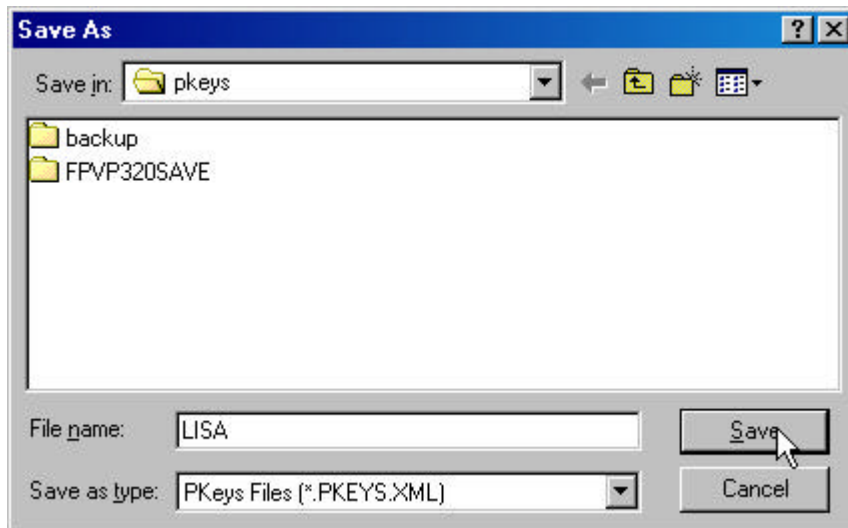
If your keys are untitled the next step is to give them a Name. Select **Save As** from the **File** pull down menu



The Save dialogue box will appear as below:



Type in your name and click the **Save** button.



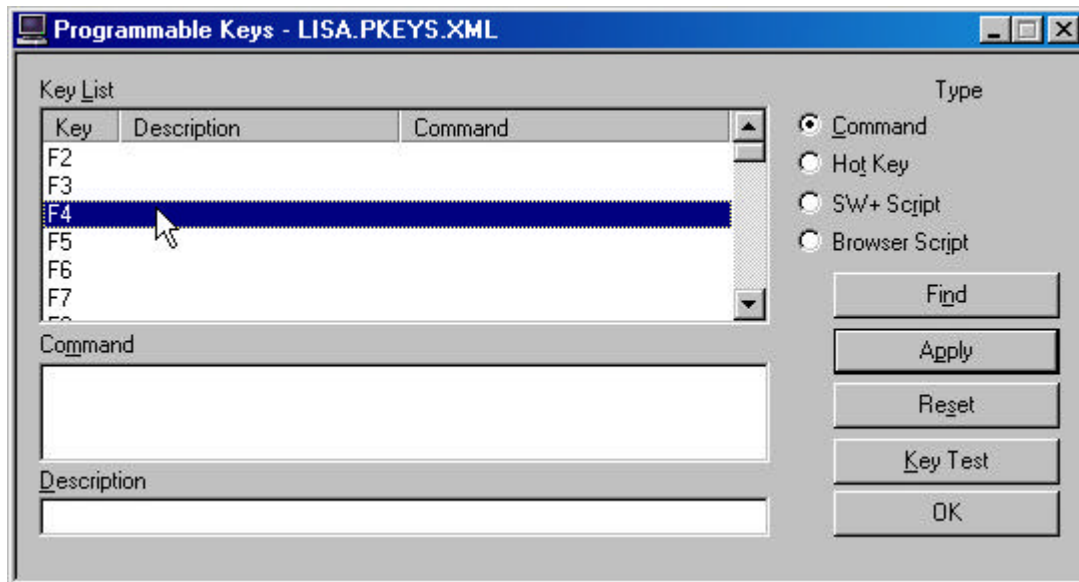
The word “untitled” should now be replaced with your name as shown below.





Defining a Key

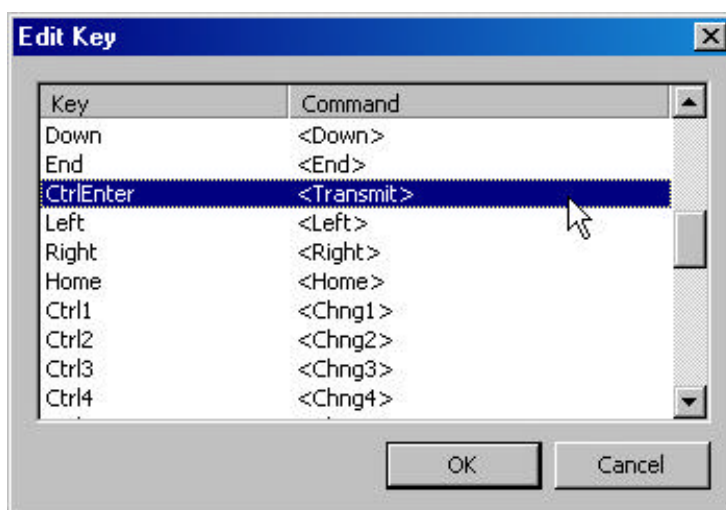
Highlight the key you would like to define. In this example the F4 button will be set to Move the Mar.



Tab to the Command area. When the cursor starts flashing in the command area you can start typing the entry you would like recorded. Look at the below example:

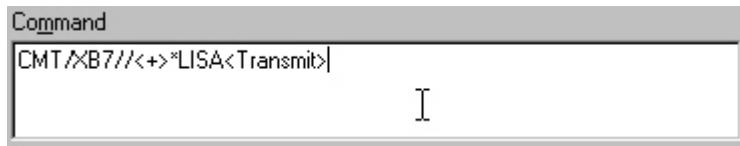


To make the entry automatically transmit to the host, select the **F**ind button to the left. The Edit Key dialogue box will display. Scroll through the list till you find the one you want. Highlight it as select OK.





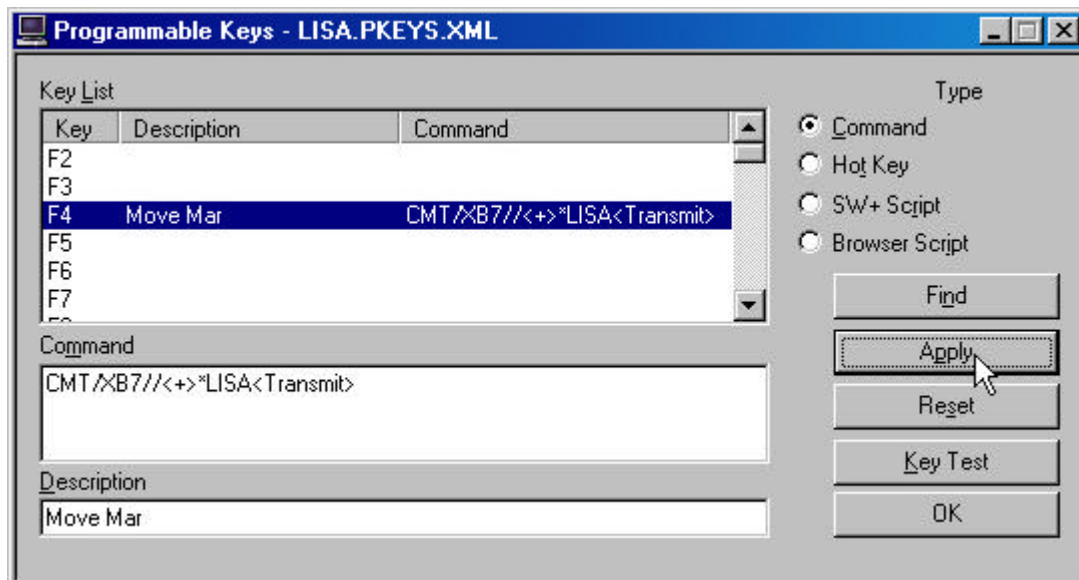
The Transmit option will now display in the Command area in the position the cursor was.



Tab to the Description area below the Command window and type a Description of the entry



Click the Apply button to the left and the entries made will now appear in the top Key list window as shown.



Select **F**ile and **S**ave the select the **O**K button to close the Programmable Keys dialogue box.

When testing keys you should ensure that you have ended any bookings you have been working on first.

Test the Key by pressing the associated button:



The entry will appear on screen in the window that the cursor was flashing in.

The * indicates that the mar entry has been completed successfully.



Multiple entries can be placed on the same button as per the example below the Move mar now has a *R following so that after the Mar is moved the booking is redisplayed with the FONE field displayed.

```
Command
CMT//XB7//<+>*LISA<Transmit>*R<Transmit>
```

```
FONE-SYDT*02 9391 4000 GALILEO PRODUCT TESTING-LISA
>
```



Focalpoint Programmable Keys

The Programmable Keys for Focalpoint® have been converted to binary XML allowing old Programmable Keys from a previous version of Focalpoint® to be translated into the new Programmable Keys format. There is a compatible Programmable Key editor.

Several of the PKey commands have been changed. This will not affect the conversion of PKeys from a previous version of Focalpoint® to the current one. The change will only affect how the new PKey commands are entered. The PKey commands that are entered from the list when selecting Find will be the same. However, when in the Command Line many of the shortcuts are now different. The following table shows the changes to the shortcuts.

Old Command Shortcut	New Command Shortcut	Description of Command
\	Ctrl+J	<CR>
CtrlAltTab	ShfTab	<Backtab>
CtrlDown	Down	<Down>
CtrlEnd	End	<End>
CtrlLeft	Left	<Left>
CtrlRight	Right	<Right>
CtrlHome	Home	<Home>
CtrlShf(Window#)	Ctrl(Window #)	<Change#>
CtrlShfAltTab	Tab	<Tab>
CtrlShfB	CtrlB	<Print>
CtrlShfE	CtrlE	<DelLine>
CtrlShfJ	F1	<Help>
CtrlShfL	CtrlL	<EraseEOL>
CtrlShfS	CtrlS	<ClearAll>
CtrlShfW	CtrlW	<Clear>
CtrlShfX	CtrlP	<PrintAll>
CtrlShfZ	CtrlAdd	<ZoomIn>
CtrlShfZ	CtrlSubtract	<ZoomOut>
CtrlUp	Up	<Up>
}	Ctrl+Sft+T	<tabstop> (see note below)

Note: The tabstop command in the Apollo/Galileo Keyboard Mode remains the same as the old shortcut format (}). It has only been changed for the new Standard PC Keyboard Mode.

In the PKey editor it does not matter if using upper or lower case letters since the command is forced to upper case unless in Standard Windows Mode. In Standard Windows Mode Focalpoint® reads both upper and lower case.