

## Travelport Technical Sales and Solution

### Fare Display .NET Library with uAPI

Library File to be used:

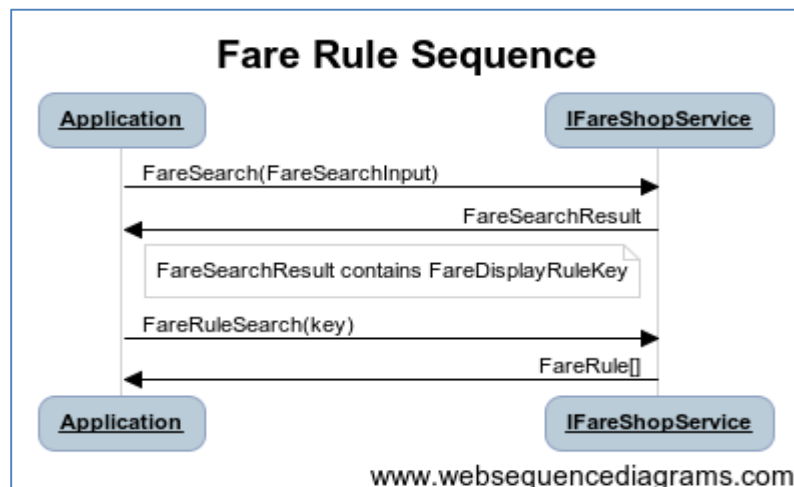
- Travelport.FareComponents.dll
  - This library defines all the interfaces required for fare display
- Travelport.FareComponents.UAPI.dll
  - This library provides implementation to uAPI

There are 4 main activities for fare display:

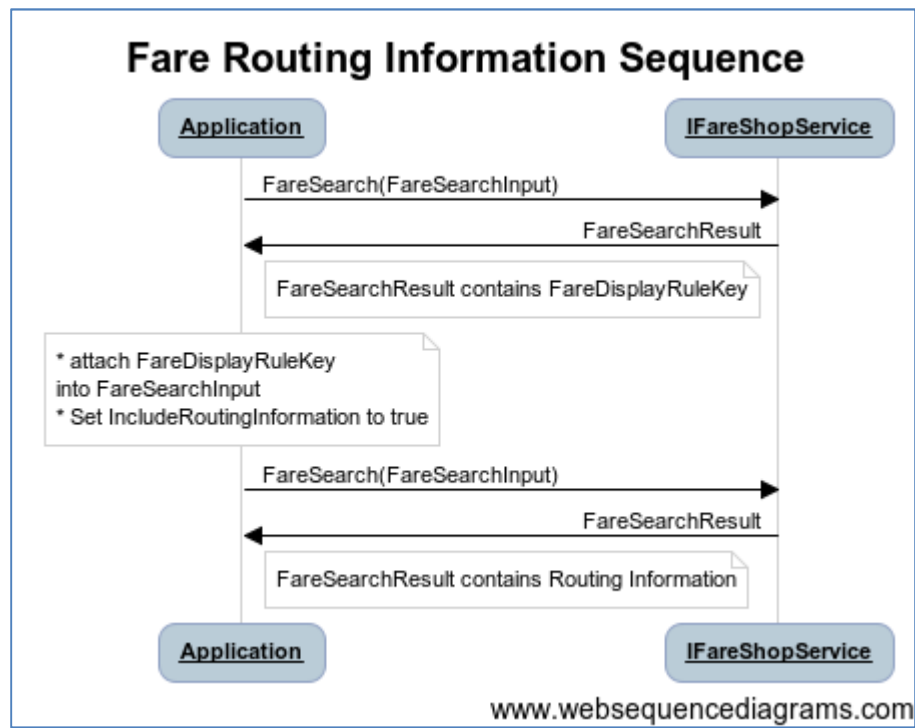
- Fare Search:
  - Use FareSearch defined in IFareShopService, given parameters defined in FareSearchInput .



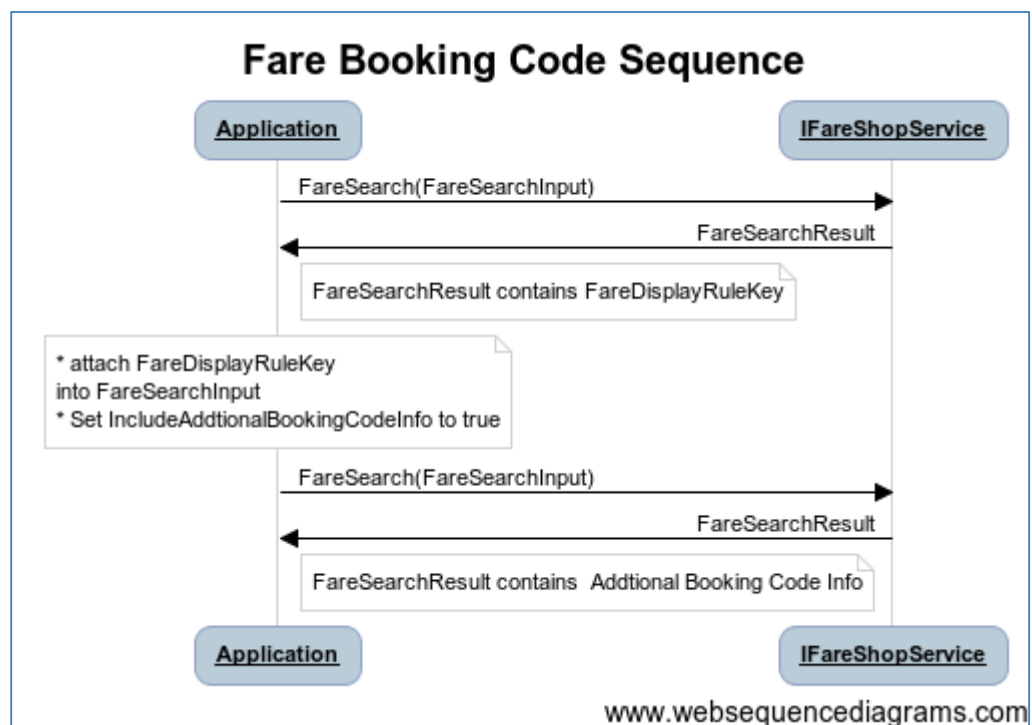
- Display fare rule.
  - Use FareRuleSearch defined in IFareShopService, using FareDisplayRuleKey from result of FareSearch.



- Display fare route.
  - Use FareSearch defined in IFareShopService, given parameters defined in FareSearchInput and FareDisplayRuleKey from result of FareSearch.



- Display fare booking code.
  - Use FareSearch defined in IFareShopService, given parameters defined in FareSearchInput and FareDisplayRuleKey from result of FareSearch.



Sample application:

Fare Search

PRIVATE FARE SEARCH 65JC | Budi Mulyawan

Origin  Destination  Departing  Return

Class  Journey Type  Airline

Private Fare  Public Fare  Estimate Total  Fares in  Account Code  PTC

CARRIER	ORIGIN	DESTINATION	PASSENGER TYPE	BASE FARE	TAXES	TOTAL	FAREBASIS
AR	AKL	RIO	ADT	NZD1700.00			OLS12MNZ
UA	AKL	RIO	ADT	NZD1779.00			WLE05NCA
AR	AKL	RIO	ADT	NZD1900.00			QLS12MNZ
AR	AKL	RIO	ADT	NZD2100.00			LLS12MNZ
UA	AKL	RIO	ADT	NZD2129.00			VLE05NCA
LA	AKL	RIO	ADT	NZD2160.00			NLESP40Y
JJ	AKL	RIO	ADT	NZD2160.00			QLEZP40Y
QF	AKL	RIO	ADT	NZD2160.00			QLBBN
AR	AKL	RIO	ADT	NZD1099.00			LOWNZ
AR	AKL	RIO	ADT	NZD2300.00			NLS12MNZ
LA	AKL	RIO	ADT	NZD2370.00			SLELE40Y
JJ	AKL	RIO	ADT	NZD2370.00			GLEZE40Y
QF	AKL	RIO	ADT	NZD2370.00			NLBBN
AR	AKL	RIO	ADT	NZD2500.00			VLS12MNZ
QF	AKL	RIO	ADT	NZD2560.00			SLBBN
LA	AKL	RIO	ADT	NZD2560.00			VLELE40Y
JJ	AKL	RIO	ADT	NZD2560.00			KLEZE40Y
UA	AKL	RIO	ADT	NZD2629.00			QLE05NCA
AR	AKL	RIO	ADT	NZD2700.00			MLS12MNZ
QF	AKL	RIO	ADT	NZD2990.00			VLBBN
LA	AKL	RIO	ADT	NZD2990.00			MLEFX00Y
JJ	AKL	RIO	ADT	NZD2990.00			MLEZX00Y
UA	AKL	RIO	ADT	NZD3029.00			HLE0ZNCA
QF	AKL	RIO	ADT	NZD1625.00			SLBBOWN
AA	AKL	RIO	ADT	NZD3349.00			LHP2NZ
EK	AKL	RIO	ADT	NZD3359.00			BLE1YNZ1
EK	AKL	RIO	ADT	NZD3464.00			MLE1YNZ1
EK	AKL	RIO	ADT	NZD3569.00			WLE1YNZ1
NZ	AKL	GIG	ADT	NZD1800.00			WLSVAM

Fare Rule (by double clicking on result row above)

FARE RULE

**FareRules Routing BookingCode**

CATEGORY	VALUE
0	<p>RULE - 018/4ARJ UNLESS OTHERWISE SPECIFIED SPECIAL FARES FROM SOUTH WEST PACIFIC TO AREA 1 APPLICATION AREA THESE FARES APPLY FROM S.W. PACIFIC TO AREA 1. CLASS OF SERVICE THESE FARES APPLY FOR ECONOMY CLASS SERVICE. TYPES OF TRANSPORTATION FARES GOVERNED BY THIS RULE CAN BE USED TO CREATE ROUND-TRIP/CIRCLE-TRIP/OPEN-JAW JOURNEYS. FARES ONLY APPLY IF PURCHASED BEFORE DEPARTURE. EXCEPTION- MAY BE USED FOR EN-ROUTE UPGRADING FROM A LOWER FARE PROVIDED ALL CONDITIONS OF THESE FARES ARE MET. OTHER CONDITIONS PASSENGER EXPENSES NOT PERMITTED FOR BASIC SEASON FARES</p>
3	<p>PERMITTED 01FEB THROUGH 30NOV ON THE FIRST INTERNATIONAL SECTOR. UNLESS OTHERWISE SPECIFIED THE FARE COMPONENT MUST NOT BE ON ONE OR MORE OF THE FOLLOWING AM FLIGHTS 3000 THROUGH 9999 CZ FLIGHTS 501 THROUGH 599 CZ FLIGHTS 701 THROUGH 799 CZ FLIGHTS 1001 THROUGH 1999 CZ FLIGHTS 4001 THROUGH 4999</p>

**Fare Routing (by double clicking on result row above)**

FARE RULE

FareRules Routing BookingCode

---

**INFORMATION**

AKL-RIO SAT-20JUL13 AR	ADULT FARES	CX	FARE	FARE	C	AP	MIN/	SEASONS.....
NZD BASIS MAX	14 AR 2500.00R VLS12MNZ V   /12M	01FEB4-30NOV4 R PA						S
ROUTE: 0008	AKL(EK)SYD-BUE-RIO	AKL(EK)SYD-BUE(AR/G3)RIO						AKL(EK)SYD-
AKL(NZ)SYD-BUE-RIO	AKL(NZ)SYD-BUE(AR/G3)RIO	AKL(NZ)SYD-BUE-IGR-RIO						
SYD-BUE-RIO	AKL(DJ/VA)SYD-BUE(AR/G3)RIO	AKL(DJ/VA)SYD-BUE-IGR-RIO						A
AEP-RIO	AKL(DJ/VA)SYD-EZE-AEP(AR/G3)RIO	AKL(DJ/VA)SYD-EZE-AEP-IGR-RIO						AKL(I
RIO	AKL(EK)SYD-EZE-AEP(AR/G3)RIO	AKL(EK)SYD-EZE-AEP-IGR-RIO						AKL(NZ)SYC
AKL(NZ)SYD-EZE-AEP(AR/G3)RIO	AKL(NZ)SYD-EZE-AEP-IGR-RIO							

**Fare Booking Code (by double clicking on result row above)**

FARE RULE

FareRules Routing BookingCode

---

**INFORMATION**

014 AKLRIO 20JUL13 AR NZD 2500.00 VLS12MNZ STAY---/12MBK-V

FARE CLS	EXPLANATION	BOOK CODES
-----	-----	-----
VLS12MNZ	BASIC SEASON INSTANT PURCHASE 2ND LEVEL V	
VLS12MNZ	FARES	
VLS12MNZ	BETWEEN S.W. PACIFIC AND AREA 1 FOR ROUND TRIP FARES	
VLS12MNZ	FOR ADULT	
<b>BOOKING CODE EXCEPTIONS</b>		
VIA AR Y	REQUIRED	BETWEEN AEP-EZE
VIA AR Y	REQUIRED	WITHIN ARGENTINA
VIA AR Y	REQUIRED	BETWEEN AREA 1-ARGENTINA

## Configuration:

Please make sure your application configuration (App.config or web.config) contains necessary binding as per example below:

```
<?xml version="1.0" encoding="utf-8" ?>
<configuration>
  <startup>
    <supportedRuntime version="v4.0" sku=".NETFramework,Version=v4.5" />
  </startup>
  <system.serviceModel>
    <bindings>
      <basicHttpBinding>
        <binding name="AirFareRulesBinding">
          <security mode="Transport">
            <transport clientCredentialType="Basic" />
          </security>
        </binding>
        <binding name="AirFareDisplayBinding" maxReceivedMessageSize="2147483647">
          <security mode="Transport">
            <transport clientCredentialType="Basic" />
          </security>
        </binding>
      </basicHttpBinding>
    </bindings>
    <client>
      <endpoint address="https://apac.copy-
webservices.travelport.com/B2BGateway/connect/uAPI/AirService"
        binding="basicHttpBinding" bindingConfiguration="AirFareRulesBinding"
        contract="uAPIAirService.AirFareRulesPortType" name="AirFareRulesPort" />
      <endpoint address="https://apac.copy-
webservices.travelport.com/B2BGateway/connect/uAPI/AirService"
        binding="basicHttpBinding" bindingConfiguration="AirFareDisplayBinding"
        contract="uAPIAirService.AirFareDisplayPortType" name="AirFareDisplayPort" />
    </client>
  </system.serviceModel>
</configuration>
```

It is required to have your own uAPI Credential as advised before. In the sample application I have put test credential into ConnectionInfo for temporary use.

Please contact your Travelport account manager to arrange uAPI credential.