



GALILEO™



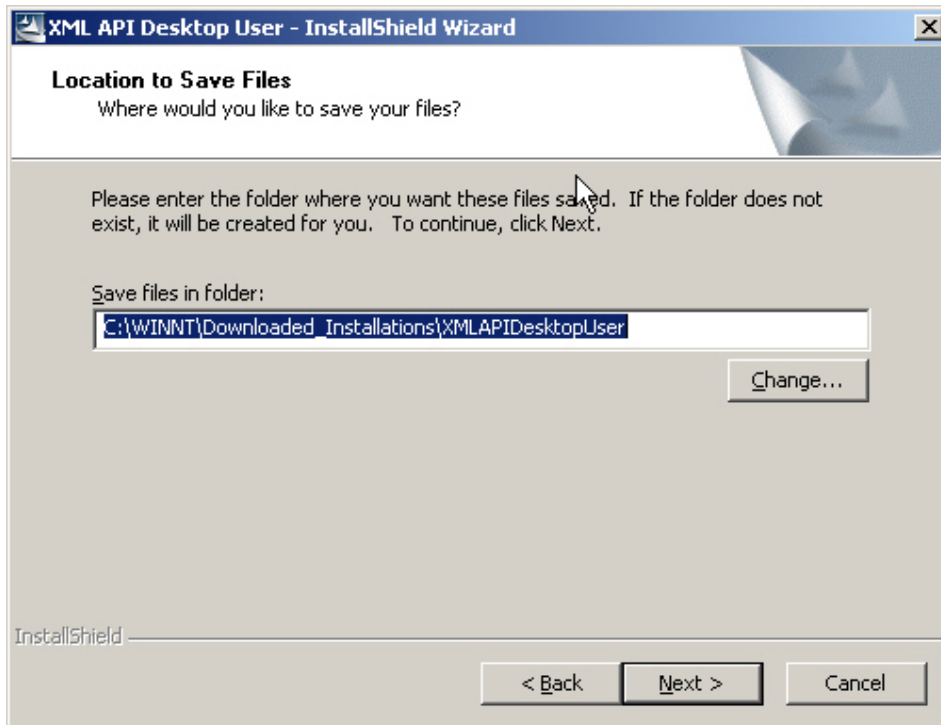
## The XML Desktop

Download the installation files from [Http://support.galileo.com/gsc/xmldesktop.htm](http://support.galileo.com/gsc/xmldesktop.htm)

When prompted select OPEN.



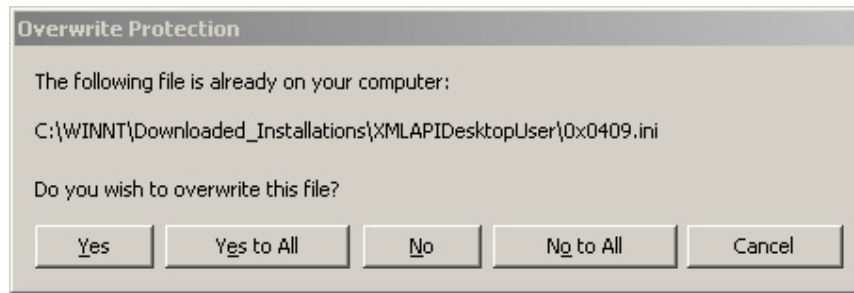
Select NEXT



The installation files will download and save to disk, in a default location as shown above.

If you have many workstation you can change the destination of where the installation files download to.

When ready click NEXT



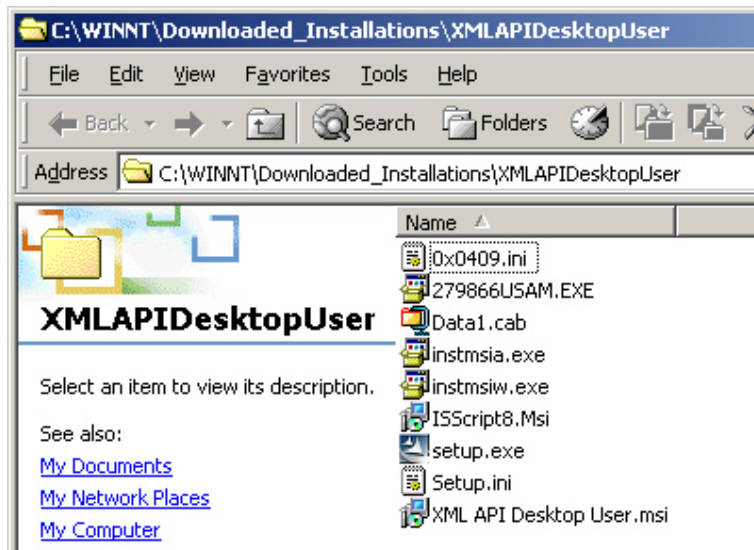
If "Overwrite" warnings display during the download process, ensure you select YES TO ALL. You will only see this warning if you already have the XML Desktop installation files on your workstation already.

Downloading the installation files will now complete.

After the installation files have completed downloading the actual installation process should automatically begin.

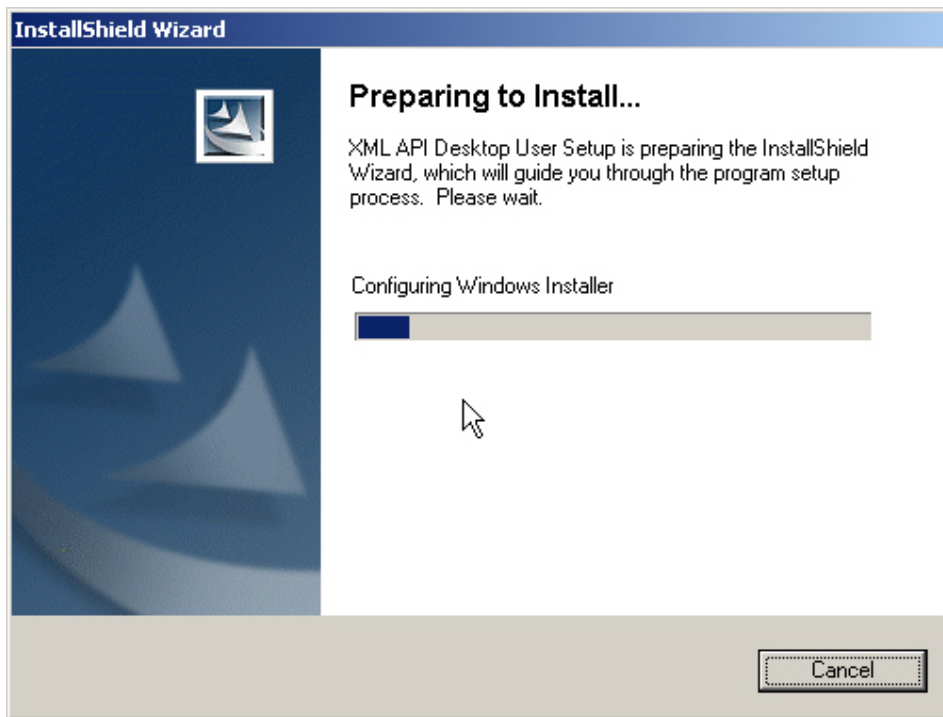
**NOTE:**

If this process does not automatically begin or if you are installing many workstations, second and subsequent installations of the XML Desktop can be launched by browsing to the location where the installation file where saved to.

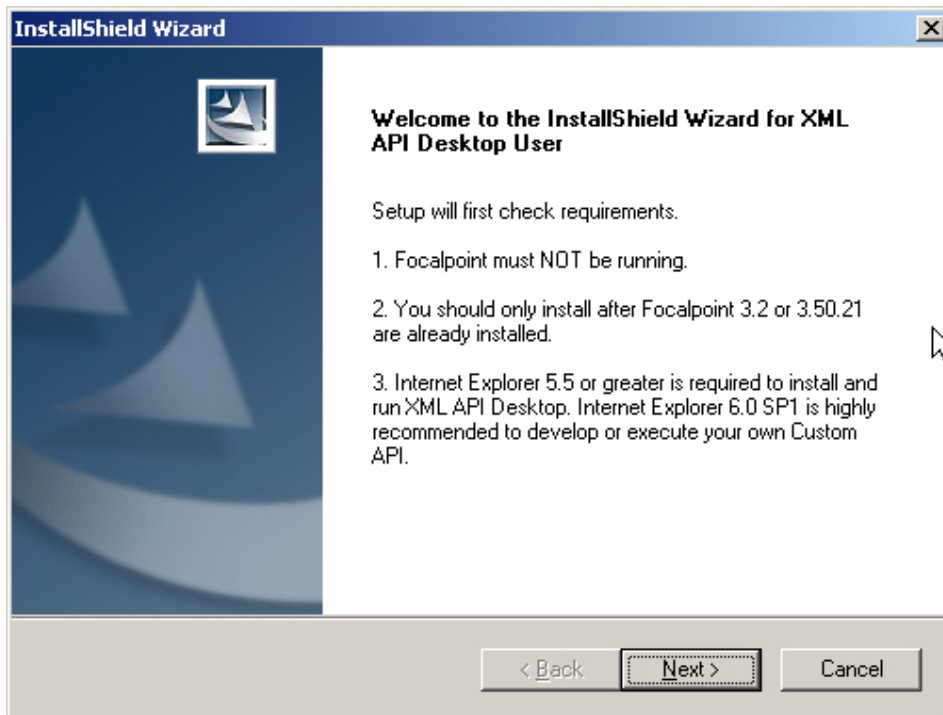


Double click on the SETUP.EXE icon

## Installing the XML Desktop

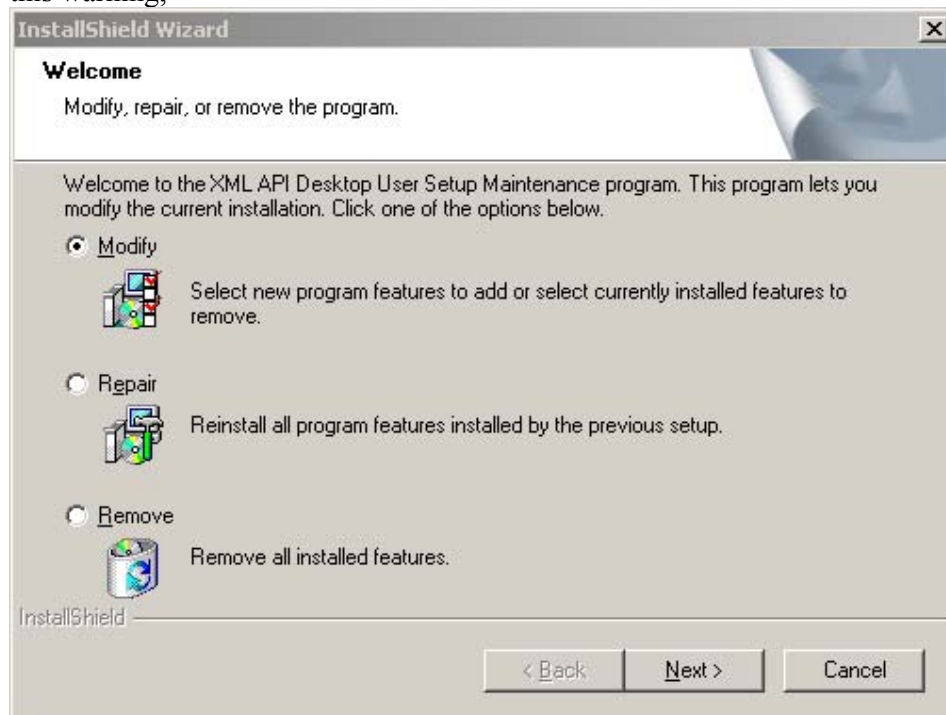


Select NEXT



Ensure all other applications are closed before selecting NEXT.

If Galileo's XML Select Desktop is already installed on your machine you will see this warning,

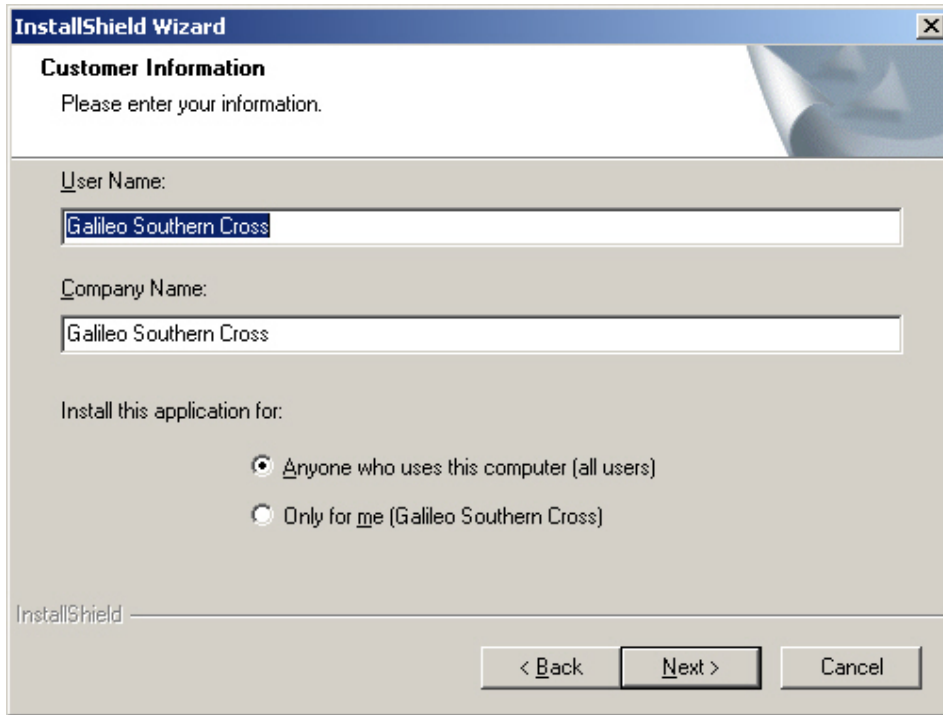


Select REPAIR and then NEXT.

If you have never installed XML Select Desktop before this screen will display.

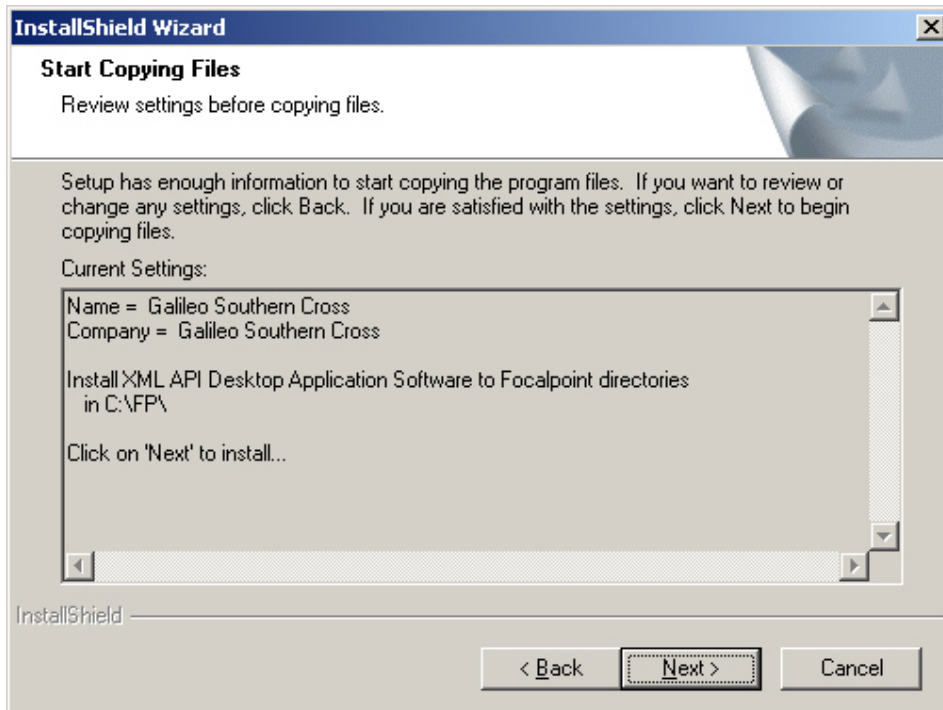


Please read the agreement and select YES, if you agree.  
Selecting NO will stop the installation.



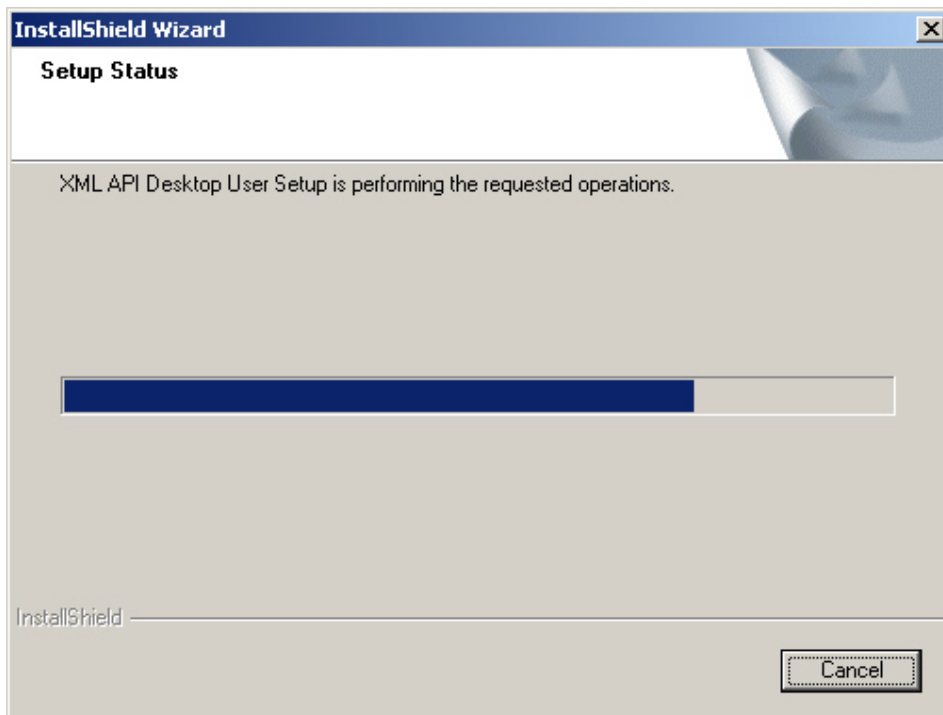
The screenshot shows the 'InstallShield Wizard' window with the 'Customer Information' step. The title bar reads 'InstallShield Wizard'. Below the title bar, the text 'Customer Information' is displayed, followed by the instruction 'Please enter your information.' There are two text input fields: 'User Name:' containing 'Galileo Southern Cross' and 'Company Name:' also containing 'Galileo Southern Cross'. Below these fields, the text 'Install this application for:' is followed by two radio button options: 'Anyone who uses this computer (all users)' (which is selected) and 'Only for me (Galileo Southern Cross)'. At the bottom of the window, there are three buttons: '< Back', 'Next >', and 'Cancel'. The 'InstallShield' logo is visible in the bottom left corner.

Enter your Computer name and Company name,  
Ensure the radio button is selecting “Anyone who uses...” and select NEXT

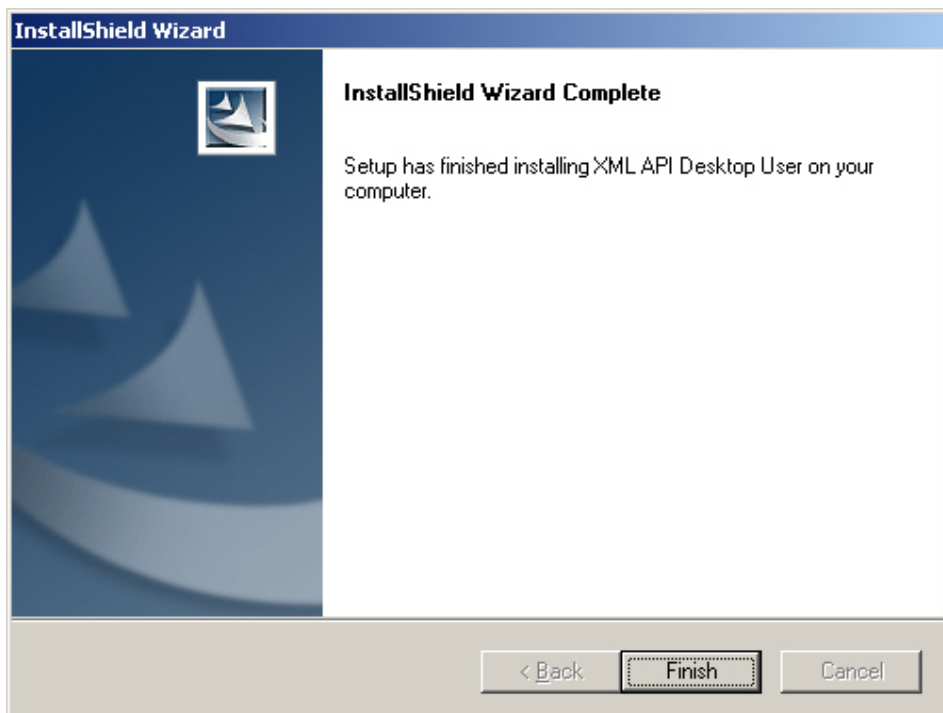


The screenshot shows the 'InstallShield Wizard' window with the 'Start Copying Files' step. The title bar reads 'InstallShield Wizard'. Below the title bar, the text 'Start Copying Files' is displayed, followed by the instruction 'Review settings before copying files.' A paragraph of text reads: 'Setup has enough information to start copying the program files. If you want to review or change any settings, click Back. If you are satisfied with the settings, click Next to begin copying files.' Below this text, the label 'Current Settings:' is followed by a scrollable text area containing: 'Name = Galileo Southern Cross', 'Company = Galileo Southern Cross', 'Install XML API Desktop Application Software to Focalpoint directories in C:\FP\'. Below the scrollable area, the text 'Click on 'Next' to install..' is displayed. At the bottom of the window, there are three buttons: '< Back', 'Next >', and 'Cancel'. The 'InstallShield' logo is visible in the bottom left corner.

This is a summary screen only, Please select NEXT.



This fuel guage will flash across the screen a few times during the installation. No action is required. This process may take up to three minutes.



Now select Finish. You have now successfully installed the Galileo XML Desktop.