



Galileo International

Technical Support Documentation

Trend Micro PC-cillian

Exception Creation List

For Focalpoint[®], Viewpoint[™] & Focalpoint Print Manager[™]
(GALILEO[®] and APOLLO[®] PRODUCTION SYSTEMS)

Copyright

Copyright © 2001 Galileo International. All rights reserved.

Information in this document is subject to change without notice. The information described in this document is furnished to Galileo International subscribers, or their representatives, and is provided as is under a license agreement or nondisclosure agreement. No part of this publication may be reproduced, stored in a retrieval system, or transmitted in any form or any means electronic or mechanical, including photocopying and recording for any purpose other than the subscriber's personal use without the written permission of Galileo International.

Trademarks

Apollo, Galileo, the Globe Device, Focalpoint Print Manager and Viewpoint are registered trademarks, trademarks or service marks of Galileo International in the United States and/or other countries.

Galileo International may have patents or pending patent applications, trademarks, copyrights, or other intellectual property rights covering subject matter in this document. The furnishing of this document does not give you any license to these patents, trademarks, copyrights, or other intellectual property rights except as expressly provided in any written license agreement from Galileo.

Introduction

This document outlines configuration changes that are required by a firewall administrator to allow Galileo's Focalpoint®, Viewpoint™ and Focalpoint Print Manager™ (FPM) applications to establish a session with Galileo's computer reservation system (CRS) hosts when using Trend Micro's PC-cillian Internet Security software. Galileo International provides this information as a guide only. The term "Inbound" indicates traffic passing into the subscriber's network from the reservation system. The term "Outbound" indicates traffic passing out of the subscriber's network to the reservation system).

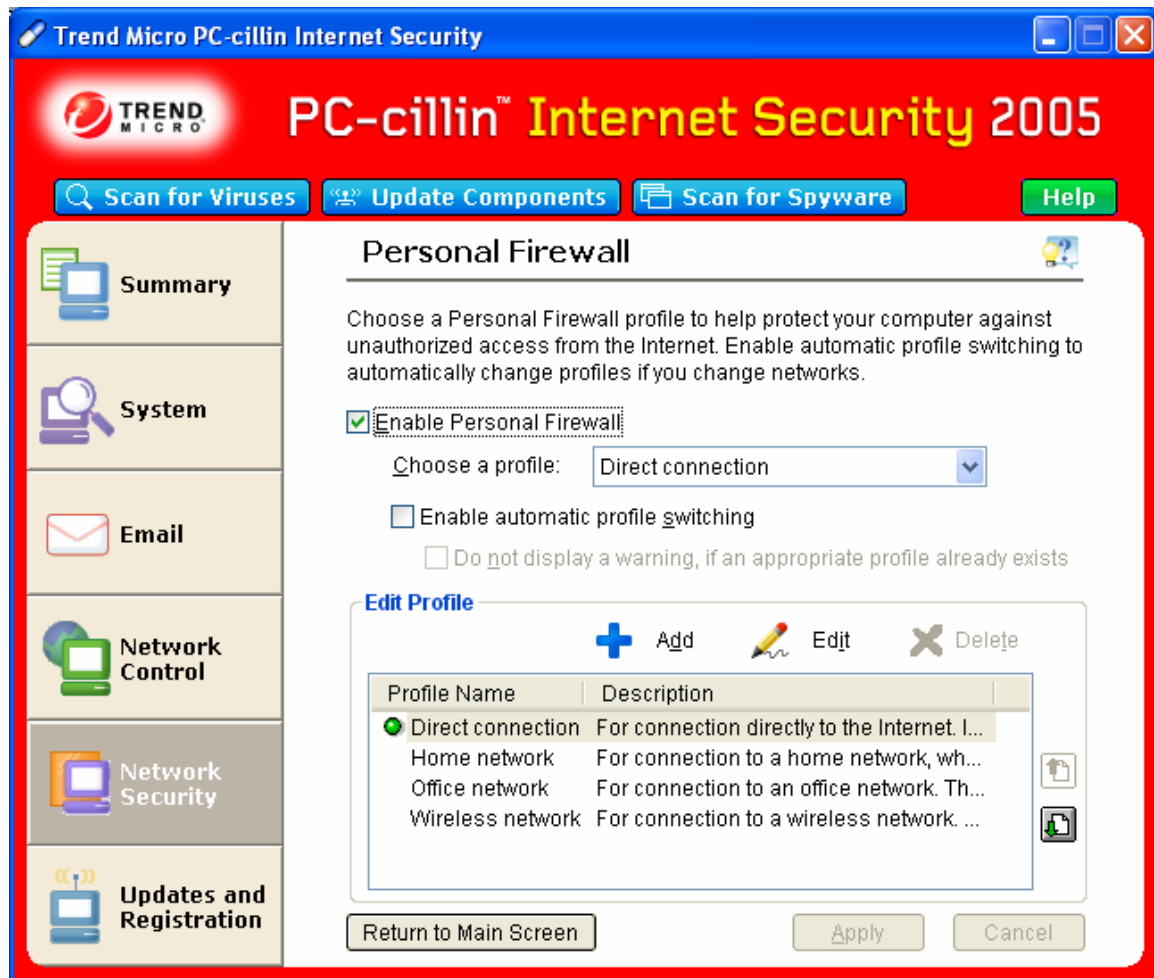
Configuration of Trend Micro's PC-cillian placed between the computer(s) running Focalpoint, Viewpoint and FPM and the Galileo® or Apollo® host system(s) is the sole responsibility of the Galileo customer. It is strongly recommended that the subscriber or firewall administrator contact their respective firewall providers prior to making changes to support Galileo International products. Galileo International does not provide technical or help desk support in these types of configurations.

Exception List Creation

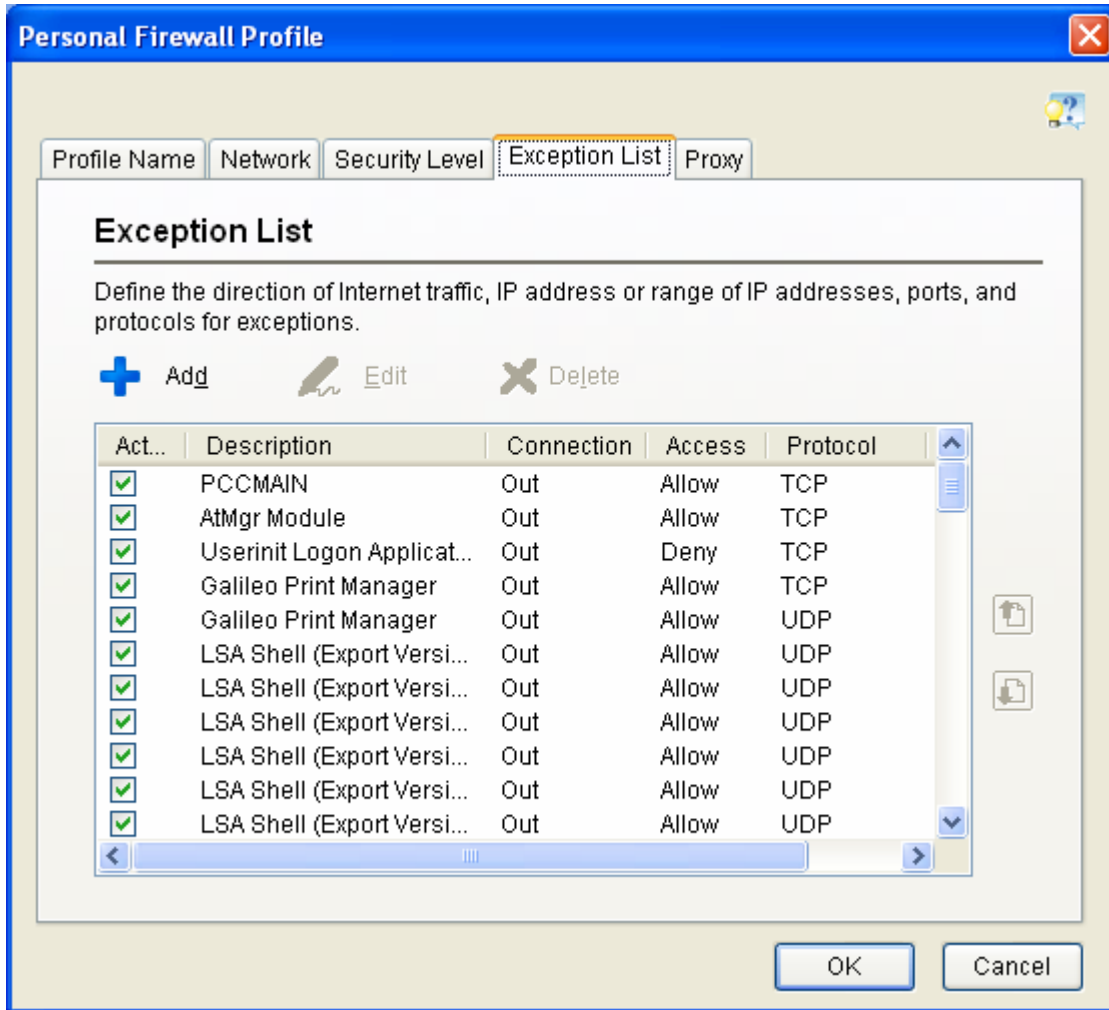
Note, you will need to create an exception list to allow UDP 4500 to pass through the firewall.

Start by accessing PC-cillian, either via the programs list under the start menu or by double clicking Trend Micro icon in the lower right corner system tray.

Once PC-cillian is displayed, click Network Security on the left side.



Click on the direct connection profile and click edit.



On the Exception list, click Add.

Change the name from “new rule” to FPNETIPSEC.GALILEO.COM.

Click Specified application, than click Browse. Navigate to the Extranet_serv.exe file which is located in c:\program files\Nortel Networks folder. Highlight the file, than click OK.

Verify that outgoing under connection and allow under action are selected.

Choose UDP under protocol and specified ports, type 4500 in the white box.

Under IP Setting, click IP address in the drop down list and type:

Fpnetipsec.galileo.com in the Host Name box and click resolve. The host name will be replaced with the IP address of 198.151.32.105.

Verify your configuration with the example below, than click OK.

Add/Edit Personal Firewall Exception

Description: FPNETIPSEC.GALILEO.COM

Target:

- All applications
- Operating system components
- Specified application: Contivity VPN Client

C:\Program Files\Nortel Networks\Extranet_serv.exe

Connection: Incoming Outgoing

Action: Allow Deny Warn

Protocol

- TCP
- UDP
- TCP/UDP
- ICMP
- ANY

Port(s): All ports Specified port(s): 4500

(For example, 10, 15, 20 - 30)

IP Setting

Type: IP address

Host name:

IP address: 198 . 151 . 32 . 105

Click OK on the Personal Firewall Profile page and than Apply on the personal firewall page. You have successfully added the required exception lists for the direct connection profile. Repeat these steps for each profile that you may use.