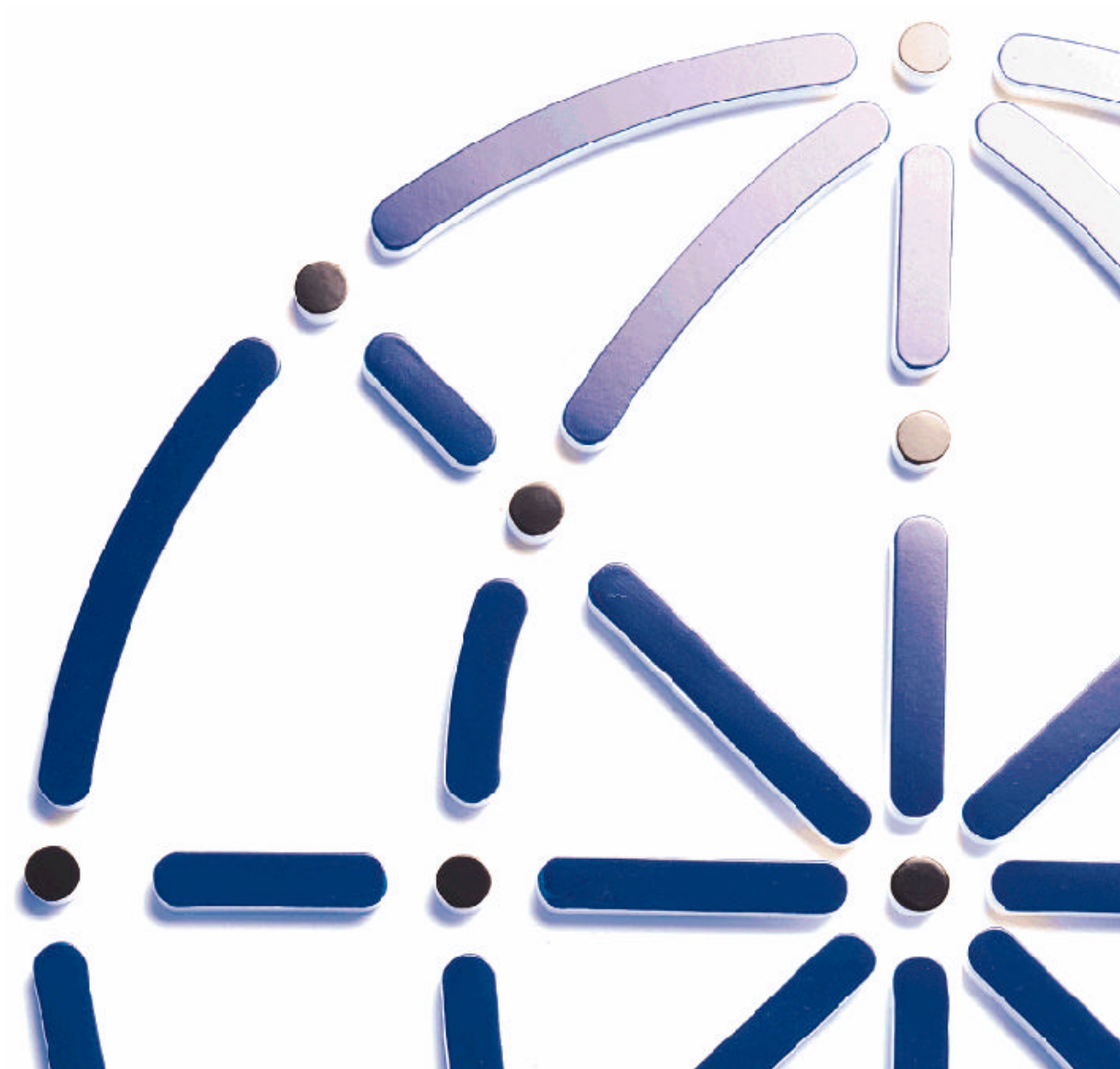


# Windows 2003

## *Establishing a VPN Tunnel without Nortel*

Access Products

Updated 19 May, 2006



## Copyright

Copyright © 1998 Galileo International. All rights reserved.

Information in this document is subject to change without notice. The software described in this document is furnished under a license agreement or nondisclosure agreement. The software may be used or copied only in accordance with the terms of those agreements. No part of this publication may be reproduced, stored in a retrieval system, or transmitted in any form or any means electronic or mechanical, including photocopying and recording for any purpose other than the purchaser's personal use without the written permission of Galileo International.

## Trademarks

Galileo International may have patents or pending patent applications, trademarks, copyrights, or other intellectual property rights covering subject matter in this document. The furnishing of this document does not give you any license to these patents, trademarks, copyrights, or other intellectual property rights except as expressly provided in any written license agreement from Galileo.

All other companies and product names are trademarks or registered trademarks of their respective holders.

# ***Table of Contents***

Table of Contents.....	3
Introduction .....	4
Requirements.....	5
Assumptions .....	5
Adding VPN account.....	6
Customising the VPN Properties .....	11
Setting the Galileo Userid & Password.....	16
Connecting the VPN.....	18
Route Add Statement.....	20

## *Introduction*

This document has been put together in response to customers requirements where conflicting 3<sup>rd</sup> party software does not allow the use of Nortel Extranet, provided for by Galileo Southern Cross when installing FocalPointNet.

This guide is intended as an aid for installing and configuring FocalpointNet single or multi user environment on a Windows 2000 Professional machine. This guide is in response to customer requests and does not constitute a released or supported product. The following documentation is based on internal testing at Galileo Southern Cross. These procedures may vary depending on individual site requirements and server administration differences.

This solution is not supported by Galileo Southern Cross Service Centre, and troubles experienced by users using this method of connectivity must understand that there is no service level agreement.

## Requirements

The following hardware and networking must be installed and functioning before FocalpointNet is configured and installed:

- ISP access and Internet connectivity.

---

**IMPORTANT:**

Windows NT Administration password is required.

---


## Assumptions

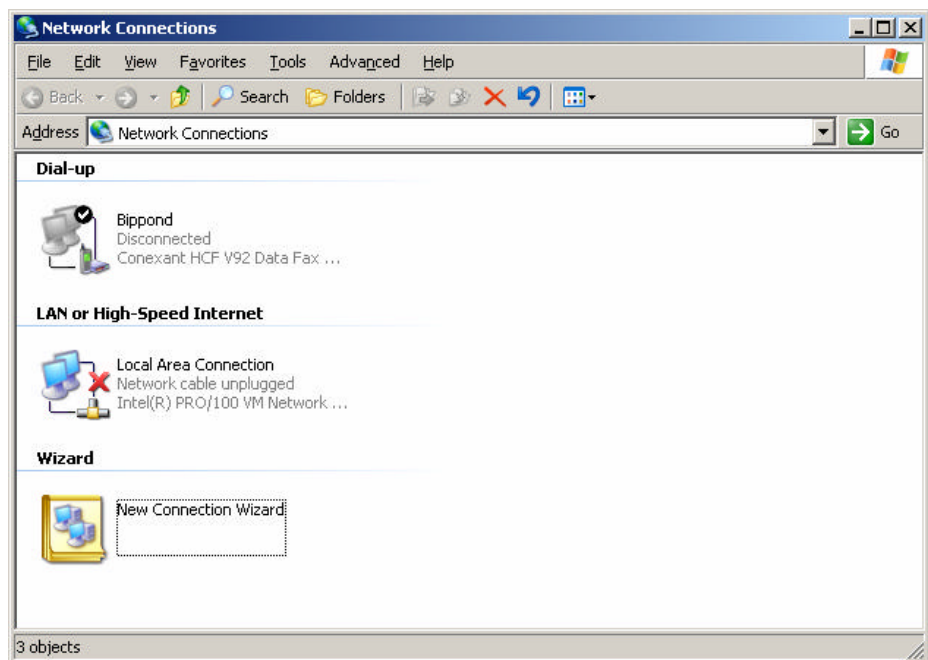
This guide is intended to document the process for installing VPN Connectivity, however, these procedures cannot duplicate the process that will be required for every installation. The following assumptions apply to this guide:


1. The user has already installed Focalpoint 3.50.21, Galileo Desktop, Galileo Print Manager and Wingate (if multi-user environment) and found that Nortel Extranet is incompatible.
2. The drive locations will vary depending on your server environment. For this document, the following standards apply:
  - Drive C designates the local drive of the W2K machine.
  - Drive A designates the floppy drive.
  - Drive D designates the CD-ROM drive.

## Adding VPN account


 ENSURE YOU ARE LOGGED IN AS THE ADMINISTRATOR

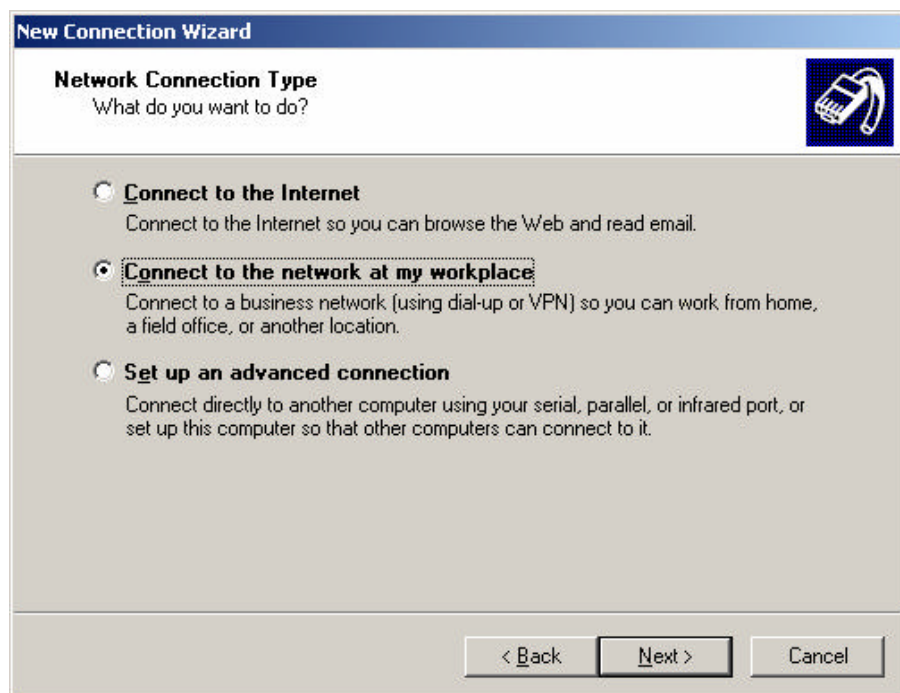
 Right click on the My Network Places icon on your desktop and select properties or select the Network icon from the Control Panel,



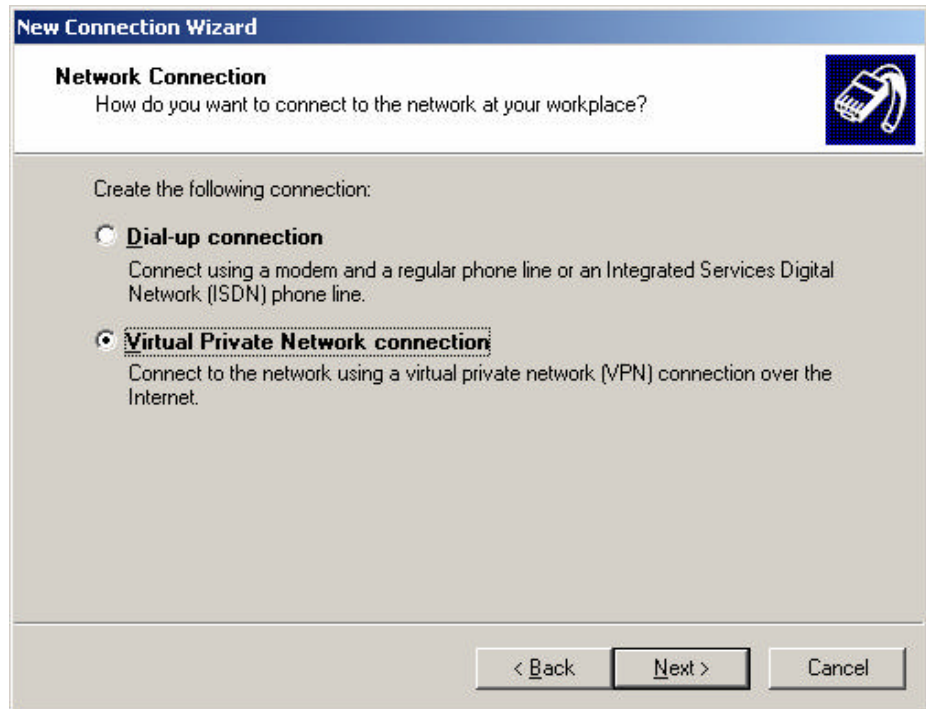
 Select the New Connection icon to launch the Network Connection Wizard as pictured next.



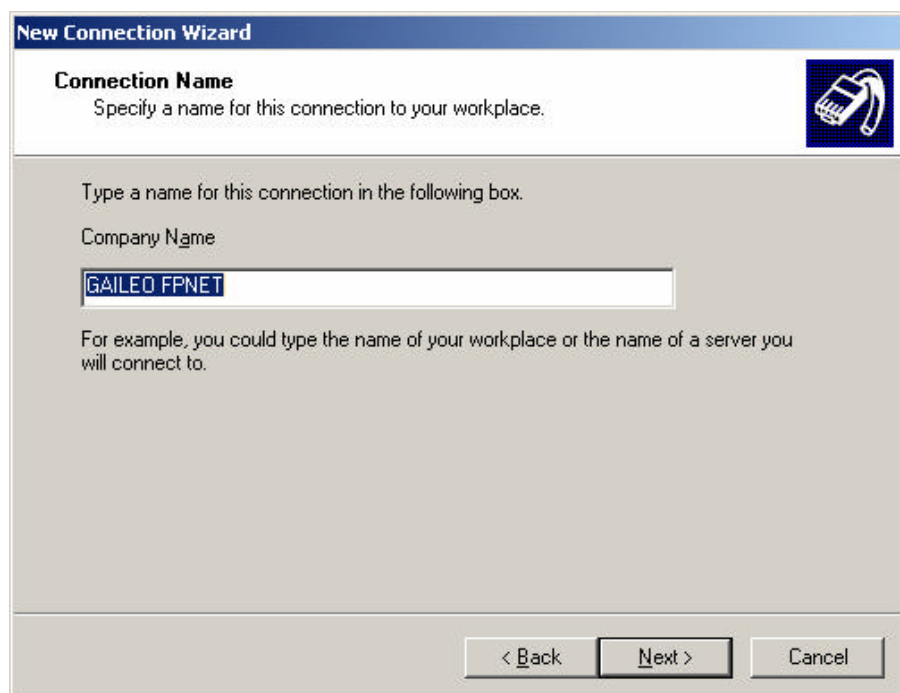
 *Select Next*




 *Select the 2<sup>nd</sup> Radio option, Connect to the network at my place, then select next*

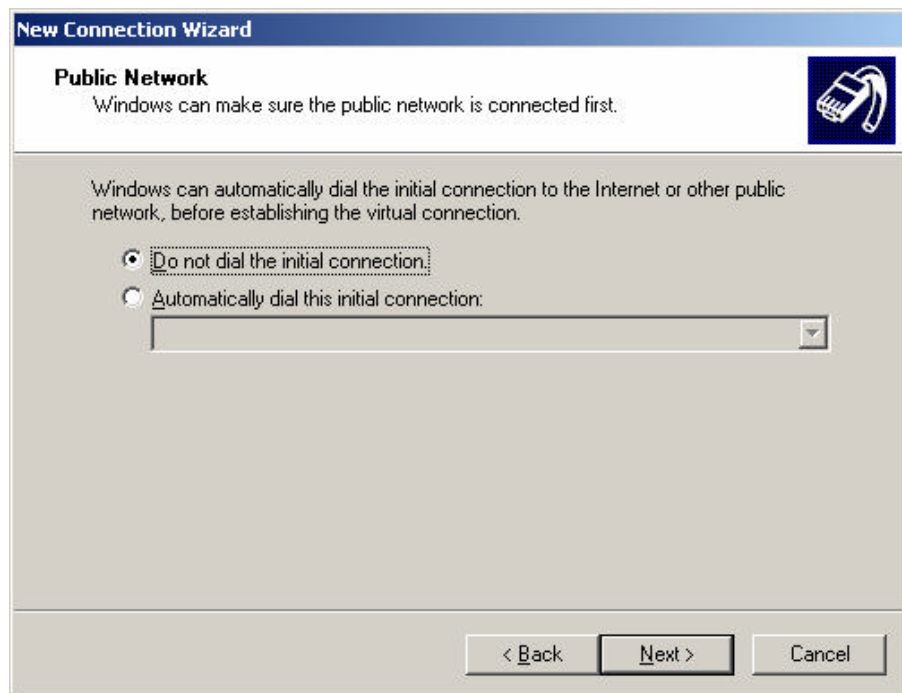


 *Select Virtual Private Network connection*



 *Type "Galileo FPNet" in the company Name and click Next.*



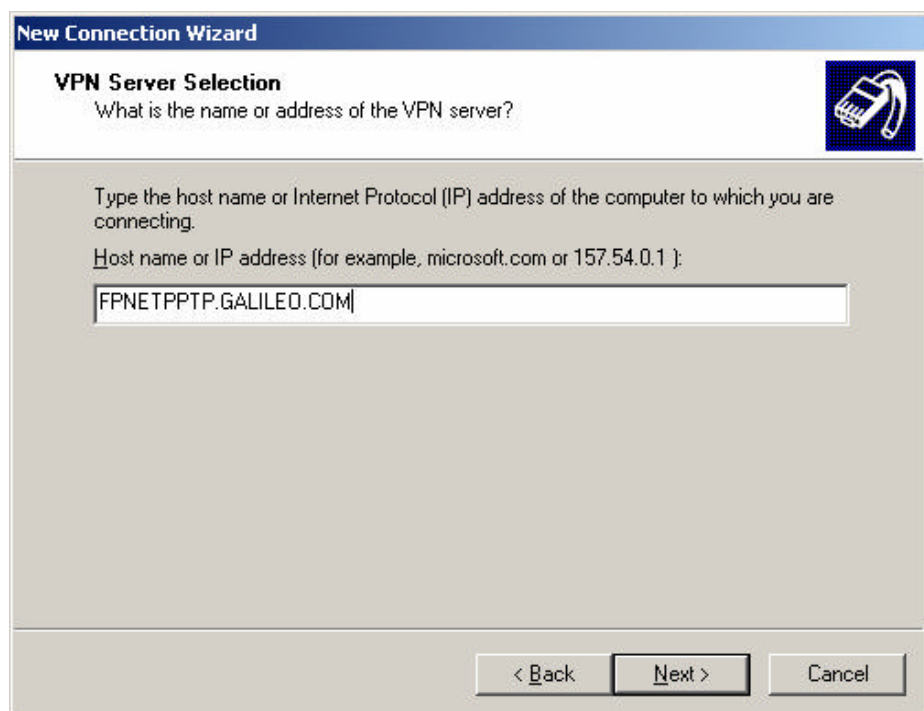


The Public Network Window displays next.


This screen will allow the opportunity to establish the ISP connection if no connection is present when connecting the VPN tunnel.

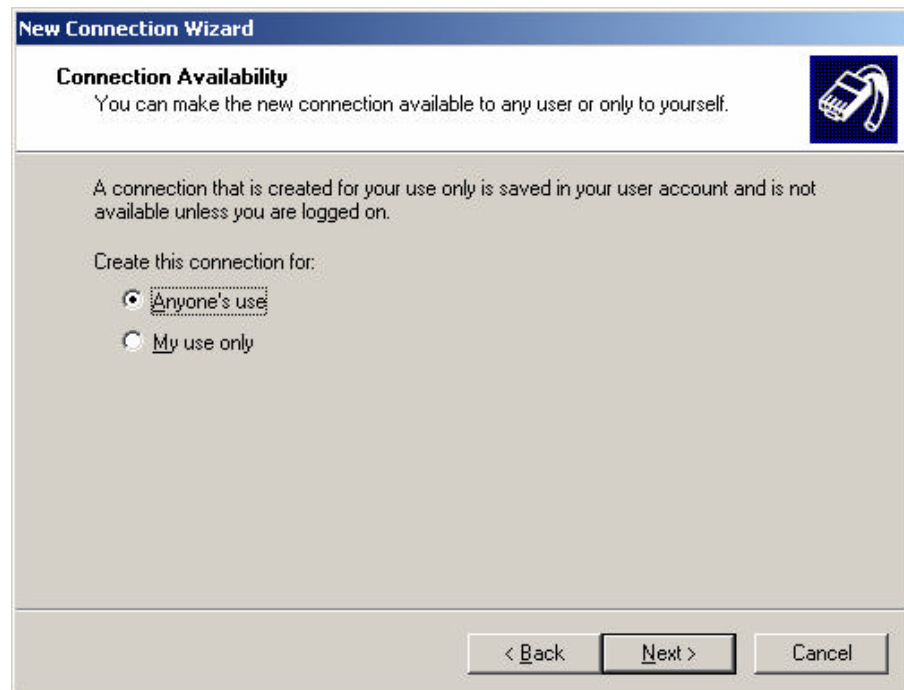
It is recommended that you change the default to “Do not dial the initial connection”.

 *Select the dialup connection if required.*



The Destination Address window will display.

 Type **FPNETPTP.GALILEO.COM**  
and then select next.

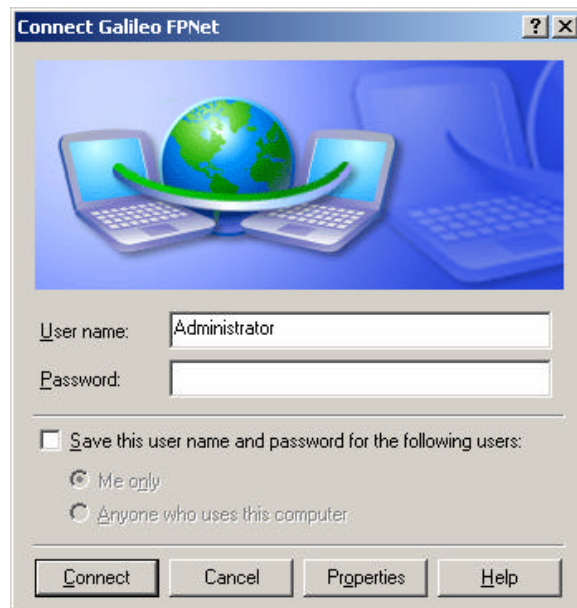


 Ensure "Anyone's Use" is selected.



 Check the *Add a shortcut* and press *Finish*.

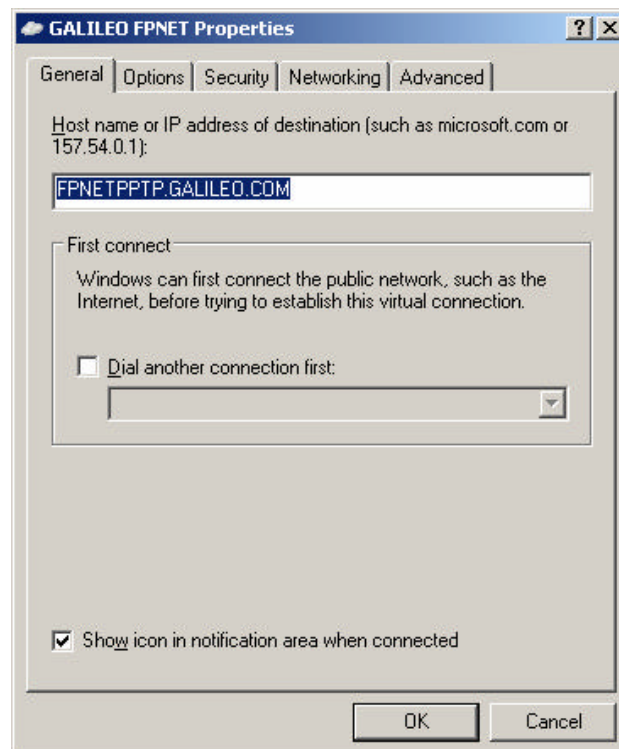
## Customising the VPN Properties



Having ended the wizard this screen will automatically display.

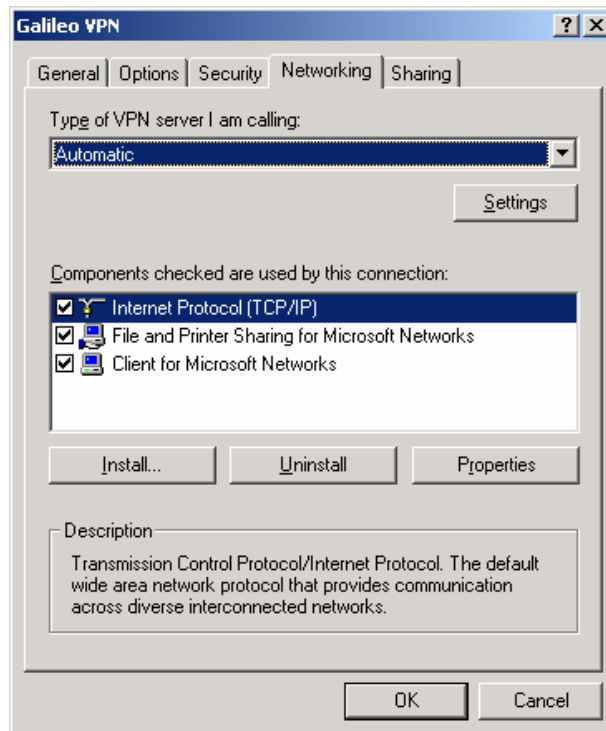


*Click the Properties Button*



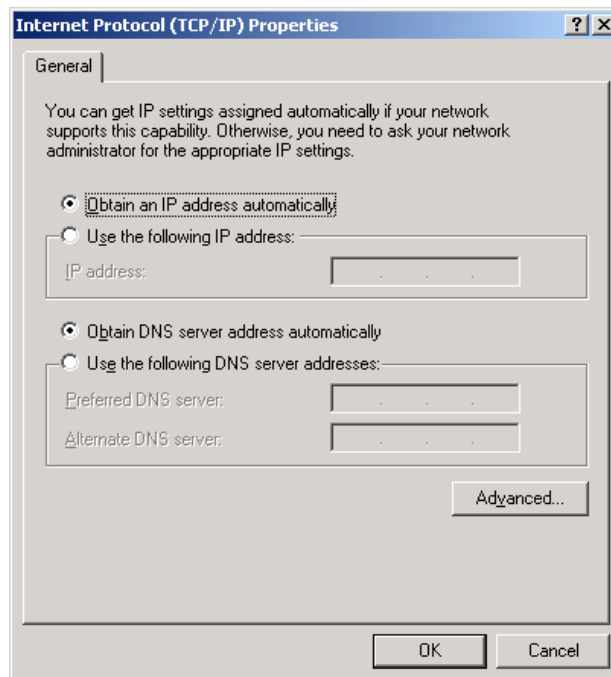
This window will display.

 *Select the Networking Tab*



Ensure INTERNET PROTOCOL (TCP/IP) is highlight then

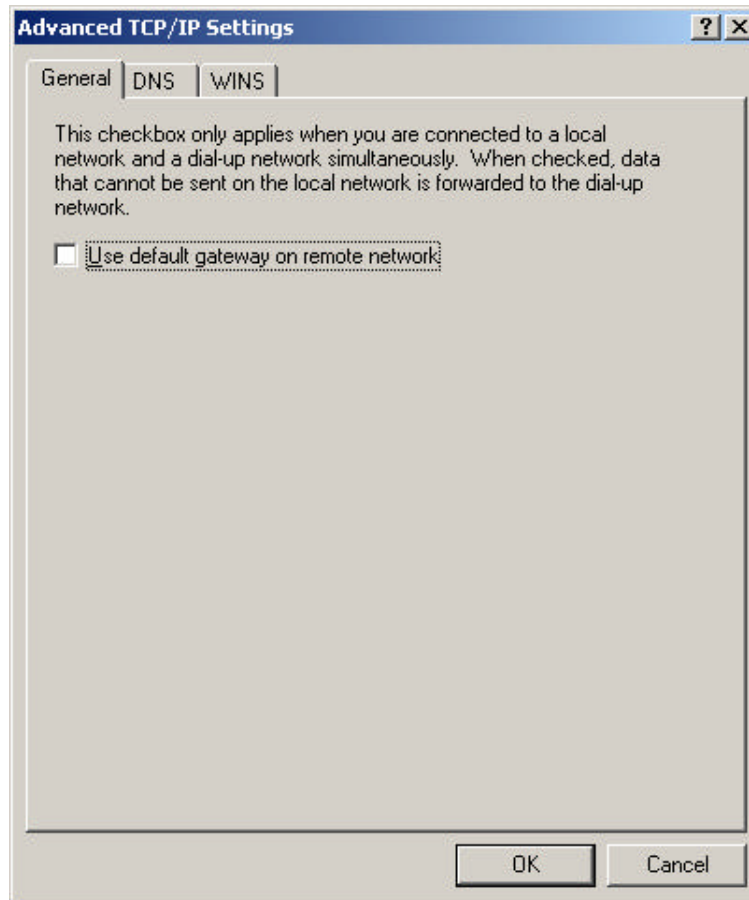
 *Click on Properties*



The above dialogue box will display.

Ensure that the two default options are set to obtain automatically.





The Advanced TCP/IP Settings window will display and it will default with the check box for “Use default gateway on remote network” selected.

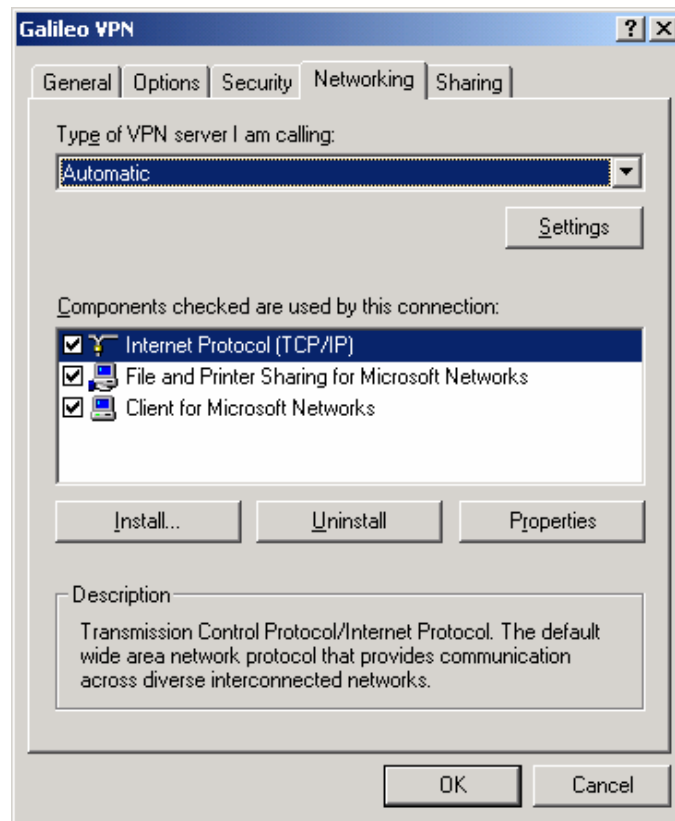


*Uncheck this option and click OK*



*Click Ok*

This window will redisplay.



 *Click OK*



This window will redisplay.

## Setting the Galileo Userid & Password

Galileo Southern Cross will allocate a Client ID, which is also the User name and a Galileo Terminal ID (GTID), which is also the password. These fields are case sensitive and must be in UPPER case.



 *Type your client id and GTID in upper case*

In this example the Client ID is G0082880. The Password will always appear as asterixs.

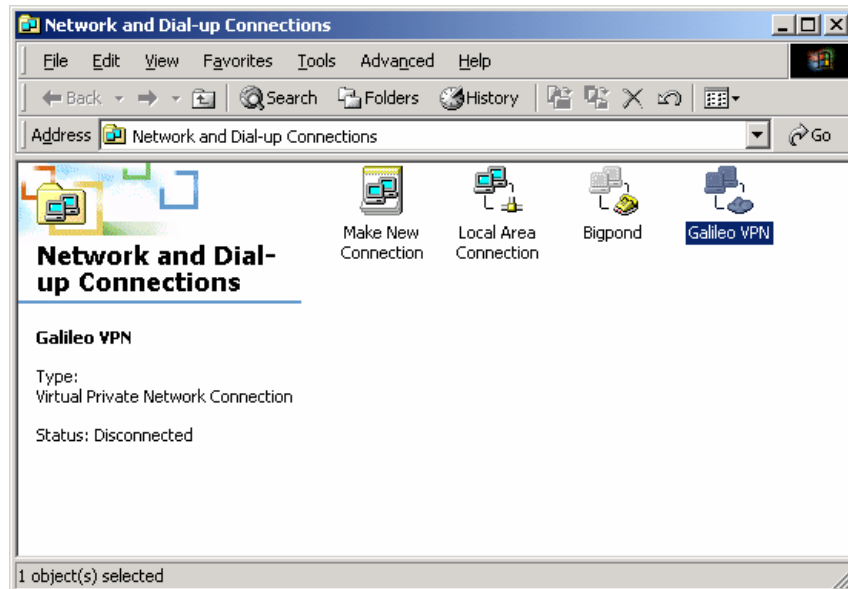




 *Click Save Password*

## Connecting the VPN

Display the Galileo VPN icon by right clicking on My Network places and selecting properties.



You may also have a shortcut on your desktop as per the wizard step mentioned on page 10.

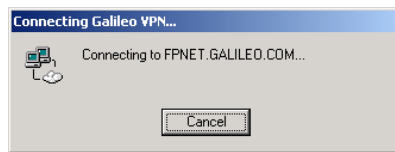


*Click on the Galileo VPN icon*



*Click on the Connect button*

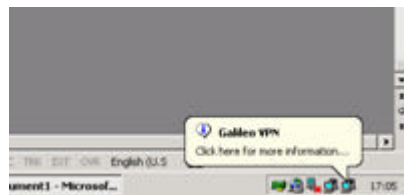
The following will appear during the connection process.



When the connection is successful it will minimise itself onto the task bar.

Care should be taken when troubleshooting as this icon will look the same as the bigpond icon and the ethernet card icon.

Floating your mouse over the icons will display which is which.



## Route Add Statement

 Display your IP addresses via the command prompt

```
C:\WINNT\System32\cmd.exe
C:\>IPCONFIG
Windows 2000 IP Configuration
Ethernet adapter {80E3A116-1EBB-4B32-991F-531FF34E8093}:
    Connection-specific DNS Suffix  . :
    IP Address . . . . . : 0.0.0.0
    Subnet Mask . . . . . : 0.0.0.0
    Default Gateway . . . . . :

Ethernet adapter Local Area Connection:
    Media State . . . . . : Cable Disconnected

PPP adapter Galileo UPN:
    Connection-specific DNS Suffix  . :
    IP Address . . . . . : 172.20.51.210
    Subnet Mask . . . . . : 255.255.255.255
    Default Gateway . . . . . :
```

The PPP Adapter Galileo VPN IP address will display.

Galileo will advise your IP address.

In the above example 172.20.51.210 has been allocated to the machine.


If the IP address that is allocated to yourself is 172.20.X.X then you can ignore the rest of this chapter.

If your IP address is 172.21.0.0 or higher you will need to add a route command to your machine.

```

C:\WINNT\System32\cmd.exe
Default Gateway . . . . . :
Ethernet adapter Local Area Connection:
    Media State . . . . . : Cable Disconnected
PPP adapter Bigpond:
    Connection-specific DNS Suffix . :
    IP Address . . . . . : 203.54.163.39
    Subnet Mask . . . . . : 255.255.255.255
    Default Gateway . . . . . : 203.54.163.39
PPP adapter:
    Connection-specific DNS Suffix . :
    IP Address . . . . . : 172.21.80.111
    Subnet Mask . . . . . : 255.255.255.255
    Default Gateway . . . . . :
C:\>
    
```

In the above example the IP address allocated by the Galileo VPN is 172.21.80.111. As this is higher than 172.21.0.0 a ROUTE ADD command needs to be added.

 *Type route add 172.20.200.0 mask 255.255.255.0 (and your ip) /p*

```

C:\WINNT\System32\cmd.exe
C:\>route add 172.20.200.0 mask 255.255.255.0 172.21.80.111 /p_
    
```

Refer <http://support/APS/files/1%20KnowledgeBase/KBx%20-%20FPN%20New%20DB%20with%20PPTP/APISD-FPN%20NewDB%20with%20PPTP.htm>

The /p will make this entry permanent and therefore only needs to be done once.

The GALILEO VPN connection must be connected when making this entry.